



Bulletin

International Association for Landscape Ecology

IALE WORLD CONGRESS 2003 IN AUSTRALIA

by IALE President Richard Hobbs¹

The IALE World Congress will be held in Darwin in July 2003. This promises to be a memorable event and a landmark in IALE history, since it will be the first time the world congress has been held in the southern hemisphere, and the first time it has been in the tropics.

The theme of the conference reflects the dual goals of the congress, which are to highlight the frontiers of the science of landscape ecology and to develop the integrative nature of the science. We aim to bring together participants from the range of disciplines included under the landscape ecology umbrella, candidly discuss the synergies and differences between different approaches, and explore the possibilities for increased communication and understanding between different cultures.

The venue is ideal for this purpose. Australia has developed its own, very pragmatic form of landscape ecology, taking the best from both the European and North American traditions, and is also increasingly trying to mesh traditional indigenous knowledge with more recent scientific approaches.

Darwin has a tropical climate, which in July is pleasantly warm and dry. The congress venues and program will allow for maximising interaction and participation, both within the formal sessions and in the social activities. In addition, a range of field trip options will be offered, ranging from one-day trips in the Darwin area to more adventurous trips to other parts of Australia and beyond. Full details will be displayed on the conference website.

We will aim to have a varied and representative scientific program, and will have a wide range of symposia, open sessions and workshops (proposed Symposia see page 2). An open call for contributions will be made later this year. Symposia are either be half-day or full day and all relate in some way to the dual themes of frontiers in landscape

IALE 2003
Crossing Frontiers –
Landscape Ecology Down Under
Building Bridges Between Cultures, Disciplines and Approaches



© Sharon Munnis 2003. Three-spiral Women's Dreaming, Jantjara Aboriginal Language group, Anmatjerrre, Central Australia, NTU. School of Art and Design, NTU

Darwin, Northern Territory, Australia,
13-17 July 2003

ecology and of building bridges. Symposium organisers are responsible for the development of their symposium, including selecting and inviting participants and arranging any publication that may arise.

We are aiming for a standard presentation format, with all talks (except invited plenaries and symposium keynotes) allocated 20 minute timeslots. In this way we hope to facilitate movement between sessions, and this is also helped by the venue layout, with all auditoriums within easy reach of each other.

Be sure to keep up to date with developments and make sure to plan to be in Darwin in July next year. I hope you will consider contributing a paper and/or helping out at the congress. If you have any ideas concerning the congress, please don't hesitate to let Richard Hobbs, Amy Hahs (a.hahs@pgrad.unimelb.edu.au) or Diane Pearson (diane.pearson@ntu.edu.au) know.

¹Address of the author: School of Environmental Science, Murdoch University, Murdoch, WA 6150, Australia; Email: r.hobbs@murdoch.edu.au

...continued from p. 1 (IALE congress 2003 Australia)

Proposed symposium titles and organisers:

	Title	Coordinators
1	Sustainable Landscapes and Natural Capital: Bridging disciplines, approaches and applications	R. Haines-Young & M Potschin
2	Comparative ecology of cities and towns: opportunities and limitations	Mark McDonnell & Amy Hahs
3	The Roles of Landscape Ecology in National and International Ecological Assessments – Innovative Approaches and Practical Considerations	James Wickham & Kurt H. Riitters
4	Landscape, what's in it? The use of classification and typology for a sound future management of cultural landscapes + Environmental Classification and its applications	Bas Pedrolí & Teresa Pinto Rob Jongman & Bob Bunce
5	Reciprocal Interactions Between Herbivores and Landscapes	Dean Anderson, Monica Turner, James Forester
6	Spatial analysis in the 21st century – are we now capable of adequately quantifying structure and heterogeneity?	Richard Aspinall & Diane Pearson
7	Landscapes as resource conserving systems: eco-hydrological interactions across scales	John Ludwig
8	Global change and landscape fires	Sandra Lavorel
9	Studying landscape change: indicators, assessment and application	Kalef Sepp & Olaf Bastian
10	Agri-Environmental schemes as real-world landscape experiments	Felix Hertzog
11	Key issues and research topics in landscape ecology	Jianguo Wu & Richard Hobbs
12	Concepts and management of landscapes by Indigenous communities	Robert Taylor
13	Landscape ecology between science and society - implementation of landscape ecological knowledge into local and regional planning	Uta Steinhard

IALE CONFERENCE SITE

<http://www.iale.ntu.edu.au>

SOME WEB SITES AUSTRALIA & NORTHERN TERRITORY



<http://www.nt.gov.au/>

<http://www.nt.gov.au/ntg/environment.shtml>

<http://www.nt.gov.au/paw/parks/darwin.html>

Maps, maps, maps:

Wine map:

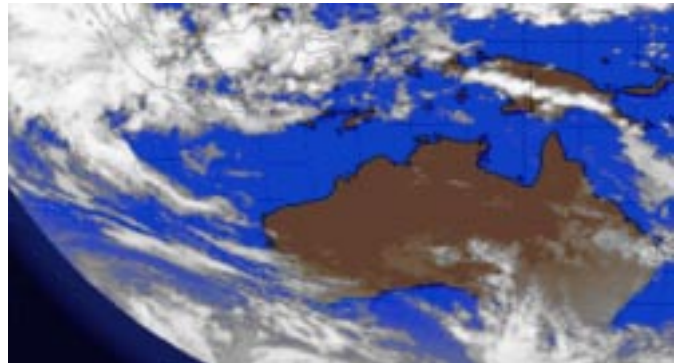
<http://www.winebase.com.au/ozmaps.htm>

Historical maps:

http://www.lib.utexas.edu/maps/historical/history_austral_pacific.html

Weather:

http://www.cnn.com/WEATHER/Australia/satellite_image.html



The IALE Bulletin is distributed six times a year to the members of the IALE. The IALE - International Association for Landscape Ecology - was founded in 1982 to promote communication between scientists, planners and interdisciplinary scientific research. IALE Executive Committee: **President:** Richard J. Hobbs (CSIRO Wildlife and Ecology, Private Bag, P.O., Wembley WA 6014, Australia), tel +61 8 9333 6442 fax +61 8 9333 6444 email Richard.Hobbs@per.dwe.csiro.au; **Past President:** John A. Wiens (USA), email jaws@lamar.colostate.edu; **Vice Presidents:** Duning Xiao (China), email Indscp@iae.syb.ac.cn; Kathryn Freemark (Canada), email kathryn.freemark@ec.gc.ca; Margareta Ihse (Sweden), email ihse@natgeo.su.se; Francoise Burel (France), email francoise.burel@univ-rennes1.fr; **Secretary General:** Michael Moss (Faculty of Environmental Sciences, University of Guelph, Guelph, Ontario, N1G 2W1 Canada), tel +1 519 824-4120 ext.4800 fax +1 519 763-4686 email mmoss@uoguelph.ca; **Bulletin Editor and Deputy Secretary General:** Felix Kienast (Swiss Federal Institute of Forest, Snow and Landscape Research WSL, CH-8903 Birmensdorf, Switzerland), tel +41 1 739 23 66 fax +41 1 737 40 80 email felix.kienast@wsl.ch; **Treasurer:** Rob Jongman (WAU, Department of Physical Planning and Rural Development), Gen. Foulkesweg 13, 6703 BJ Wageningen, The Netherlands, tel +31 317 483 713 fax +31 317 482 166 email R.H.G.Jongman@Alterra.wag-ur.nl

IALE on the Internet: IALE International: <http://www.iale.ws>

IALE FINANCIAL REPORT 2001

by IALE treasurer Rob Jongman

The overview of income and expenditure is given below together with the budget plan for 2002.

2001 was an "average" year. The number of members remained more or less the same (nearly 1500). For some individuals the fee was unaffordable. Nevertheless the overall income of IALE in 2001 was higher than 2000; fee income was 25% higher than in 2000. Also delayed payments for 1999 and 2000 have been received in this year. There is still a delay in fee payment for Italy, Australia and USA (see claims in the balance).

In 2001 the new IALE directory was distributed among the members. Bulletin distribution is now electronically to about 1000 IALE members (ca. 60%). Despite this quick, easy and cheap procedure the bulletin costs increased by € 500 primarily due to mailing costs.

Travel costs were refunded to members of the Executive Committee in cases where no other travel funds were available. Support was given to the European congress for key note speakers. In 2001 the new web site was set up. The corresponding costs are listed under debts for 2002 (see balance).

The increased income from the 2001 fees is a welcome contribution to the IALE savings fund. This fund can be used for unexpected or unusual expenses. It has grown from € 32000 to € 39000. This means that IALE is financially stronger in 2001. We expect stabilisation or a small growth for 2002. Despite this we need new members, especially student members.

For 2002 we aim at stimulating communication among members through the new Web site. It will also play a key role in the communication with other scientific societies. Funds might also have to be allocated for the world congress of 2003 in Darwin. These costs will be covered from the savings fund.

The budget plan for 2002 closes at € 5.974. This is comparable with 2001. Funds have been reserved for the directory 2003.

Assets, date 31 December 2001	Liabilities, date 31 December 2001
Fixed capital: -----	Short term debts € 3.712
Claims: € 10.367	Congress costs € 3.000
Fluid assets € 44.487	Capital € 48.142
-----	-----
Total € 54.854	Total € 54.854

Items	2001 in	2001 out	2001 Result	2002 in	2002 out	2002 result
Starting budget			€ 2.879,30			€ 5.474
fee 1999-2000	€ 15.555,48					
fee 2001 and landscape ecology	€ 16.722,26	€ 9.010,06-		€ 9.000		
fee 2002	€ 2.874,52	€ 3.276,00-		€ 17.000	€ 9.000-	
Fee 2003 and landscape ecology				€ 3.000	€ 3.000-	
Other income				€ 1.000		
directory	€ 6.070,00	€ 4.691,69-			€ 3.000-	
Bulletin	€ -	€ 2.199,44-			€ 2.000-	
travel costs	€ 267,51	€ 3.501,25-			€ 3.000-	
Congresses and working groups	€ -	€ 3.434,16-			€ 5.500-	
general costs + website	€ 1.114,79	€ 7.720,96-			€ 2.000-	
Banking and interest account	€ 21,94	€ 199,13-			€ 200-	
savings fund	€ 4.000,00	€ 10.000,00-			€ 1.800-	
transactions	€ 46.626,50	€ 44.032,69-	€ 2.593,81	€ 31.000	€ 30.500-	€ 500
total account 31-12-2001			€ 5.473,11			€ 5.974
Savings fund						
Starting capital 1-1-2001			€ 32.321,56			€ 39.014
interest 2001	€ 682,91			€ 1.000		
taken/added funds 2001	€ 10.009,63	€ 4.000,00-		€ 1.800		
Reservation Directory 2003				€ 3.000		
transactions savings fund	€ 10.692,54	€ 4.000,00-	€ 6.692,54	€ 5.800		€ 5.800
total savings 31-12-2001			€ 39.014,10			€ 44.814
total			€ 44.487,21			€ 49.787

BOOK REVIEWERS FOR LANDSCAPE ECOLOGY STILL NEEDED!

Landscape Ecology now has a book review section for the journal, and Louis Iverson is the Book Review Editor. Louis is looking for additional people willing to serve as book reviewers. We are especially in need of reviewers from countries outside of the United States (but also need additional U.S. reviewers). You do get to keep the book! If interested in serving as a reviewer, please contact Louis and send him a CV and topics of interest. When selected for a review, you will be given two months to complete the review (but I am flexible on this). The length of review should be no longer than about one page of journal space.

Also, if you have suggestions of 'must review' books, please send them (along with publisher information) to Louis, who will evaluate the request. Know however, that you will not be the one asked to review the book. Please help make this a valuable service to our field! Please send your ideas and your CVs and topical interests to:

Louis R. Iverson, USDA Forest Service, 359 Main Road Delaware, OH 43015 USA, Phone: +1 740-368-0097, Fax: +1 740-368-0152, e-mail: liverson@fs.fed.us

MEETINGS

July 8-12, 2002

Savanna Landscapes in Northern Australia - Fire and Heterogeneity, Northern Territory University, Darwin.

The Cooperative Research Centre for Tropical Savannas Management and the ARC Key Centre for Tropical Wildlife Management are holding an important conference and linked workshops on the management of fire and its implications for wildlife. The Conference will be held at the Northern Territory University, Darwin from 8 to 12 July 2002.

The conference is built around two related themes. The first deals directly with fire and management practice. It will summarise much of what is known about fire in savannas, including fire incidence, methods of measuring and describing fire patterns in space and time, and the ecological and resource management implications of those patterns. The second theme will focus more closely on the effects of fire on wildlife habitats, and in particular the role of fire in maintaining or damaging wildlife habitat values and implications of the associated changes in landscape heterogeneity for the dynamics of wildlife populations.

The insights of a large number of experienced north Australian researchers and resource managers will be supplemented by a distinguished group of international guests, who will help place

MEETINGS (cont.)

the north Australian experience in a global context, by drawing on their knowledge of recent developments overseas. In addition to the formal presentation of a wide range of papers, there will be opportunity for less formal interaction among participants in short workshop sessions. The goal of these sessions will be to attempt a synthesis of formal presentations and a statement of their implications for future research in northern Australia.

For registration details please go to the WebSite: <http://www.wildlife.ntu.edu.au/activities1.html>

March 24-26, 2003

State of the Art in Vegetation Monitoring Approaches, Swiss Federal Research Institute WSL, Birmensdorf.

The aim of the symposium is to portray and link the know-how in different fields involved in environmental monitoring (botany, ecological modeling, statistics). Standards for sampling and storage of data useful in a broad range of long-term vegetation surveys shall be worked out. The contributions shall include methodological aspects (e.g. short and long-term vegetation monitoring, descriptive analysis, environmental modeling) as well as management aspects of monitoring (e.g. development and update of large data bases).

Information and electronic registration are available at:

<http://www.wsl.ch/land/monitoring/>

August 11-18, 2002

8th International Congress of Ecology (INTECOL): "Ecology in a changing world". Seoul, Korea

More information: <http://www.seoulintecol.org/>

WE NEED YOUR INPUT IN THE IALE-BULLETIN: ARTICLES, BOOK REPORTS, MEETINGS!

Send to: Felix Kienast, Swiss Federal Institute of Forest, Snow, and Landscape Research (WSL)
CH-8903 Birmensdorf, Switzerland
Tel. +41 1 739'23'66 Fax. +41 1 737'40'80
E-Mail: felix.kienast@wsl.ch
<http://www.wsl.ch/staff/felix.kienast/>

**DEADLINE FOR
THE NEXT BULLETIN IS
JUNE 20, 2002**