

iale BULLETIN

INTERNATIONAL ASSOCIATION FOR LANDSCAPE ECOLOGY

Dear Colleagues,

Season's Greetings from your friends and colleagues at IALE!

Although 2021 was not the year that many of us hoped for, there are reasons to be optimistic that 2022 will continue our journey away from the pandemic and into a brighter future. A few highlights:

- Although the pandemic continues, vaccines are more available to broader populations around the world. Despite the delta and omicron variants, the overall trend has been downward and improved care and new drugs have reduced Covid-related mortality.
- 2022 promises to be the year that conferences return to being in-person meetings! IALE-Europe is scheduled to meet in Warsaw in July. IALE-North America will be meeting in California in March. Many other conferences are in the works. Although plans have changed at the last minute before, we now have the tools (e.g., vaccine requirements) to host/attend in-person meetings and to reconnect with colleagues and friends.

- 2021 was a harbinger of our climate future and the public is now demanding action. Perhaps COP26 did not produce the breakthrough we all wanted, yet humanity's collective and shared commitment to addressing climate change is real. Politicians and policy will follow.
- Landscape ecology continues to grow and diversify. Because our role in creating a sustainable future is critical, our discipline continues to grow. We now have more journal outlets, books, courses, and conferences than ever, all indicators that our contributions are valued and important.
- IALE also better represents the global south than at any time in our history. IALE-Africa was chosen to host the 2023 World Congress and the IALE-India chapter officially launched with a newsletter, website, etc.

Thank you, everyone, for all your hard work and your commitment to our academic society and to our global society. Please celebrate the end of 2021 with renewed

energy and optimism. I look forward to seeing many of you at conferences in 2022 (online and in person) and to rededicating ourselves to a more sustainable and equitable future!

Robert Scheller
IALE President



News from IUFRO-IALE: 30th Anniversary of IUFRO-LE Working Party

Author: IUFRO-IALE coordinator Peilei Fan

The Landscape Ecology Working Party (8.01.02) (www.iufrole-wp.weebly.com/) of IUFRO Division 8 (Forest Environment) and Unit 8.01 (Forest Ecosystem Functions) just celebrated the 30th Anniversary of the working party. Watch here: www.youtube.com/watch?v=jx_ldzaw2E for the IUFRO Landscape Ecology 30th Anniversary Webinar that took place on September 28th, as a part of the Landscape webinar series. The webinar celebrated the 30th anniversary of the Landscape Ecology WP by bringing together old and new members to share experiences from

the past and debate the future of the WP. The webinar was part of the IUFRO World Day 2021. During the webinar, IUFRO Certificates of Appreciation were awarded to 16 members who contributed decisively to the establishment and development of the WP, including Drs. D. Armenteras, L. Chen, J. Chen, T. Crow, C. Echeverria, C. Fürst, L. Iverson, R. Laforteza, S. Luque, G. Pastur, A. Perera, U. Peterson, K. Ritters, G. Sanesi, S. Saura, and K. Sugimura. Several past officers shared their personal experiences involving the working party and discussed future prospects of landscape ecology. As

tree lovers for all the landscape ecologists, global tree plantation was designed as a part of the anniversary celebration. Videos and photos of tree planting worldwide, especially in Bangladesh and Japan, were shown during the webinar as a symbolic effort from our community to make this world a better place. For details, please visit the website of the anniversary (www.iufrole-wp.weebly.com/30th-anniversary.html).

[Note: below are photos for tree planting in Bangladesh and Japan]



Tree Planting in Puthia, Rajshahi, Bangladesh. May 12, 2021 for IUFRO-WP 30 anniversary. The event was organized by Dr. Syed Ajijur Rahman, IUFRO LE WP South and Southeast Asia Regional Coordinator, and implemented by Professor Ahmed Imtia, Department of Botany, University of Rajshahi, Bangladesh. Planted species include persimmon (*Diospyros kaki*), pomelo (*Citrus maxima*), jackfruit (*Artocarpus heterophyllus*), and arecanut (*Areca catechu*).

Tree planting on September 21, 2021, Tohoku Research Center, FFPRI, Japan for IUFRO-WP 30 anniversary. The event was organized by Dr. Toshiya Matsuura, IUFRO LE WP Regional coordinator of Japan and Oceania, and implemented by Dr. Takashi Yamanaka, director general of Tohoku Research Center. Species include *Prunus grayana* (Uwamizu-zakura in Japanese) and *Thujaopsis dolabrata* (Hinoki-Asunaro in Japanese).



Prunus grayana (Uwamizu-zakura (in Japanese))

- Japanese bird cherry, which is distributed in Japan, and its family is widely distributed in Eurasia.
- The inflorescences and fruits of this tree are partly used as edible wild plants in some regions in Japan.
- This tree was thought to be used in a fortune-telling ceremony in ancient Japan.



<https://www.ninya.maff.go.jp/tohoku/syo/huzisato/zukan/uwamizuzakura.html>

IUFRO-LE Webinar Series Author: IUFRO-IALE coordinator Peilei Fan

During the pandemic, the Working Party successfully organized 5 webinars on many topics, including landscape ecology and pandemic, urban green infrastructure for resilience, forest to mitigate radioactive contamination (Fukushima and Chernobyl), ecosystem restoration, and the 30th anniversary. All webinars videos are available online (www.iufrole-wp.weebly.com/webinars.html). Based on the first and second webinars, two editorials were published in *Landscape Ecology*:

Azevedo, J. C., Luque, S., Dobbs, C., Sanesi, G., & Sunderland, T. C. (2020). The ethics of isolation, the spread of pandemics, and landscape ecology. *Landscape Ecology* 35: 2133–2140. [www.doi.org/10.1007/s10980-020-01092-8](https://doi.org/10.1007/s10980-020-01092-8)

Pamukcu-Albers, P., Ugolini, F., La Rosa, D., Grădinaru, S. R., Azevedo, J. C., & Wu, J. (2021). Building green infrastructure to enhance urban resilience to climate change and pandemics. *Landscape Ecology* 36: 665–673. www.doi.org/10.1007/s10980-021-01212-y

The Working Group was particularly active within the framework of the United Nations Decade on Ecosystem Restoration (2021-2030) that put restoration at the center of political but also scientific and technical agendas. The landscape is a useful scale to address ecosystem processes, functions and services, governance and involvement of stakeholders in decision-making, and trade-offs and synergies supporting integrated, sustainable, resilient

and equitable land management. One webinar was organized under the topic of “Landscape Ecology in the UN Decade on Ecosystem Restoration” (Webinar #4 of the working party) and another was organized under the framework of the Division 8 – Forest Environment in Spanish to highlight the work of the initiative 20x20 in Latin America (www.initiative20x20.org/). The second webinar on restoration included invited speakers from World Bank, FAO, government and key representatives from the Task Forces 20x20. These two online events reinforced the importance to multifunctional management options to find innovative and sustainable, operational and cost-effective solutions to achieve medium and long term sustainability objectives for forest landscape restoration.

French Landscape Ecology Meetings 2021 Author: Marc Deconchat

The French Landscape Ecology Meetings take place every two years. In 2021, 80 participants met in Rennes for two and a half days of scientific exchanges. With about twenty oral presentations, three invited speakers and discussion workshops on different themes, not forgetting a convivial evening, this meeting was a great moment of scientific collaboration, breaking with the cycle of virtual meetings. The presentations are available on the meeting website (www.rep21.sciencesconf.org/).

The landscape ecology meetings have been a regular feature of the scientific life of the French landscape ecology community for nearly 40 years. A retrospective of these meetings will be presented in a poster at the next joint BES-SFE² conference in Liverpool in 2022.



Organiza





III Reunión Bienal IALE-Chile

Paisajes del Antropoceno: Sustentabilidad y Resiliencia en Sistemas Socio-Ecológicos Cambiantes

Universidad Católica de Temuco
Temuco, 26 y 27 de Mayo de 2021
Modalidad On-line

Para más información visita: <https://www.iale-chile.cl/reunion-2021>
Contacto: iale-chile2021@uct.cl

Patrocina






Third Biennial Meeting of IALE Chile Author: Paula Kapstein

The III Biennial Meeting of IALE-Chile took place on May 26 and 27, 2021. The meeting was entitled: „Anthropocene Landscapes: Sustainability and Resilience in Changing Socio-Ecological Systems“, and its organization was led by Dr. Daniel Rozas, as general coordinator, and IALE Chile members Gonzalo Rebolledo and Katherine Hermosilla, all of them from the Catholic University of Temuco. 130 attendees participated in the III Meeting of IALE-Chile with almost 70 presentations. The quality of the exhibited

works and posters were a main highlight, with an active participation of researchers from different countries in Latin America, which led to interesting discussions on the proposed topics, encouraging academic reflection on the different lines of research that were presented.

The Conference was organised around five topics:

(i) landscape planning and ecosystem services, (ii) landscape patterns and processes, (iii) biodiversity, conservation and adaptation, (iv) society and

sustainability of landscape and (v) landscape ecology in urban spaces. Noteworthy international guests in charge of the inaugural talks participated each day during the meeting: Dr. Davide Geneletti (University of Trento, Italy) and Dr. Dagmar Hasse (Humbolt University of Berlin, Germany). The meeting was held remotely, and its results can be consulted on the site: www.iale-chile.cl/reunion-2021, and also on the You Tube site of IALE-Chile.



III Reunión Bienal IALE-Chile

Paisajes del Antropoceno: Sustentabilidad y Resiliencia en Sistemas Socio-Ecológicos Cambiantes

Universidad Católica de Temuco / Temuco, 26 y 27 de Mayo de 2021

Estrategias regionales de desarrollo (ERD) y transformación digital pública: desarrollo de herramientas de apoyo para la evaluación de futuros escenarios de cambio climático en la Patagonia chilena

FONDEF ID19I10236

26 mayo 2021

Ejecutores





Asociados







Iberian Congress of Landscape Ecology - Changing Landscapes and Society

Author: Antonio Gomez

The 5th Iberian Congress of Landscape Ecology was successfully held on November 18-19th, 2021 with the title of "Changing Landscapes and Society". Due to the circumstances of the past few years, the congress, initially planned as onsite format, had to be rescheduled twice. Adapting to the challenging times that we have all faced, the event was finally possible online thanks to the support offered by the University of Alicante (Spain).

The main objective was to create a space for discussion among ecologists, geographers, landscape architects, professionals, and decision makers who are involved in landscape planning and research in both countries

The full program, as well as the book of abstracts, can be found at the websites of both IALE Chapters, the Spanish and Portuguese Associations of Landscape Ecology (www.iale-esp.org/jornadas). The participation, in view of the relative event overload during that time of the year, can be considered very satisfactory. The official languages were Portuguese, English and Spanish. The recordings of the Congress will be available on the websites of both associations.

The event with 143 participants offered the opportunity to listen to 51 speakers. Four keynote speakers were invited, Prof. Jianguo Wu (Arizona State University, Editor in Chief - Landscape Ecology), Prof. Marc Metzger (University of Edinburgh, Membership Secretary - IALE-UK), Prof. Luis Quinta-Nova (Instituto Politécnico de Castelo Branco, Portugal), and Prof. Nuno Guiomar (Universidade de Évora). Furthermore, the book "Fire Science. From Chemistry to Landscape Management" (Francisco Castro Rego, Penelope Morgan, Paulo Fernandes and Chad Hoffman) was presented by Prof. Francisco Castro Rego (Institute of Agronomy, Lisbon). This led to more than 40 scientific communications that were swiftly moderated by 16 active members of the Chapters.

The main topics and ecosystem types addressed in the conference were:

Main topics

	N	%
Population	3	2
SE- Ecosystem function	12	10
Planning	16	13
Connectivity/ Structure/ Fragmentation	10	8
Fire	4	3
Modelling	13	11
RS&Methods	5	4
Management (C&R)	33	27
Land uses	19	16
Social-ecological systems	7	6

Main ecosystem types

	N	%
Wetlands	8	20
Forests	12	30
Rivers	7	18
Agroecosystems	13	33

Main addressed issues

Although no general conclusions on the presentations and panel discussions at the Congress have been drawn so far, we can advance the following themes were addressed and discussed:

- The threat of major catastrophes related to extreme events requires a managed landscape, the result of no or little intervention is negative.
- Growing conflicts between energy uses and uses based on biodiversity (natural, cultural, ecosystem services) are detected in the occupation of the territory, which can be addressed and mitigated with the help of landscape ecology tools.

- The tools for territorial analysis provided by remote sensing based on satellite images, and in particular the methodologies derived from the European Copernicus program, represent a qualitative leap for landscape monitoring and territorial planning at intermediate and detailed scales.
- Some of the current schemes related to nature conservation, in particular Habitats of Community Interest, present an insufficient spatial definition that should be revised and homogenized for the whole territory. This, together with their dynamic nature, poses conflicts with land and landscape planning strategies. Remote sensing and landscape ecology tools can contribute to finding solutions.
- There is a notable interest and growing concern for recovering the idea of landscape as an objective for nature and cultural heritage conservation, including ways of life and identity.
- The managed landscape can be seen as an intermediary for the efficient connection/ transmission of ecosystem services to human well-being. In this sense the Iberian IALE Associations subscribe the manifesto on the future of European Landscapes, and urge the regional, state, and European administrations to update their landscape policies, according to the indications of the European Landscape Convention, which, if necessary, should be made more operational.
- The Iberian associations of Landscape Ecology, express the interest to advance in the collaboration with other Chapters of IALE in Latin America, the presence at the Congress of Prof. Dolors Armenteras, President of the IALE association in Colombia, Vice president of the IALE international, has allowed to establish a first agreement to develop this collaboration.

Highlights of the 5th Iberian Congress of Landscape Ecology

Workshop “Copernicus for landscape monitoring (CopLand)”

on the use of the Copernicus Program, as a tool for analysis in landscape ecology.

Key objective: Creating a European Working Group for the topic “Copernicus for Landscape Monitoring (CopLand)”

Responsible of the activity: Dr Jose Manuel Álvarez Martínez. jm.alvarez@unican.es

Link: www.ihcantabria.com/en/directorio-personal/investigador/jose-manuel-alvarez-martinez/

This workshop addressed the use of remote sensing for landscape monitoring and how to upscale in situ data to Copernicus service. The event led to interesting discussions and debates on one of the most striking

challenges of landscape ecology: obtaining suitable estimations of the conservation status of habitats and species at different geographical scales. The workshop achieved a number of milestones such as connecting people and actions focused on monitoring landscape components with suitable estimates of their distribution and conservation status. Another successful goal was to foster the collaborative working group already established in Spain (see www.iale-esp.org/jornadas and www.coptrain.ihcantabria.com/) and expand it beyond its borders as a step to strengthen it for IALE Europe; see www.iale2021.eu/iale-2021-symposia-theme3.html

The workshop began three days prior to the Congress, from Monday 15th, with four sessions, with the last session of debate and conclusions, within the Congress days on the November 18th. In addition to technicians and scientists, the staff of regional, state, and the European

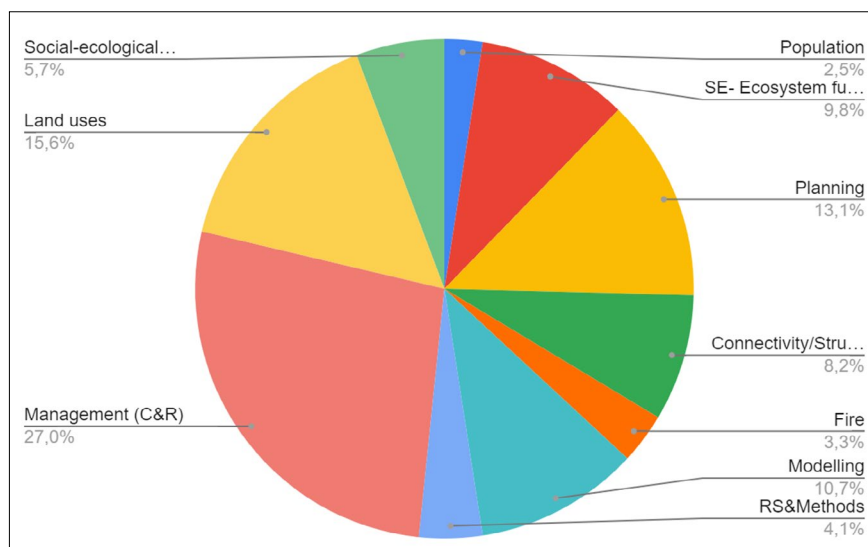
administrations (European Environment Agency) participated in the workshop.

Symposium: Landscape ecology and spatial planning.

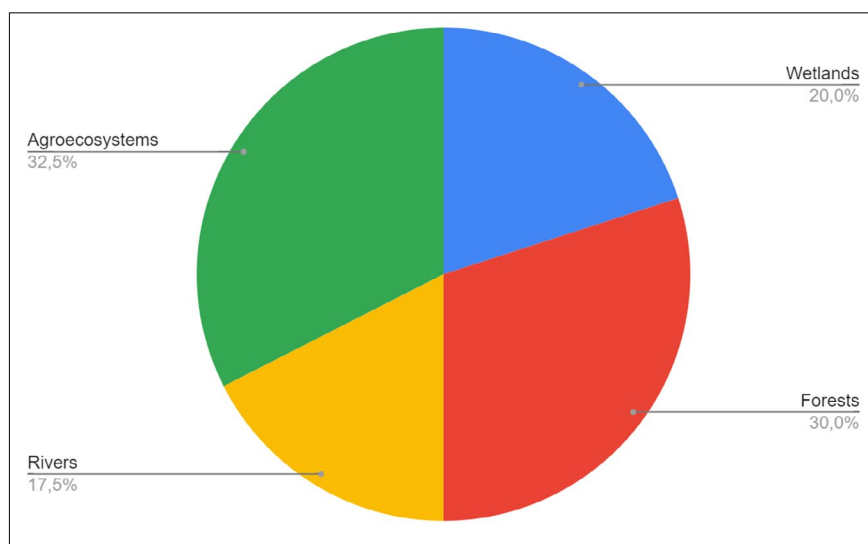
With the participation of government staff, technicians, scientists, and independent professionals involved in land use planning. It is organized with an inaugural lecture by Prof. Wu, followed by a panel discussion, in which a series of problematic aspects related to territorial planning, nature and heritage conservation are identified, pointing out the usefulness of landscape ecology in the resolution of this type of problems.

Manifesto on the future of European Landscapes

Presentation of the adhesion of the Spanish and Portuguese associations to it by Prof. Juan José Galán (UNISCAPE, Valencia University, Spain).



The main topics of the contributions to the 5th Iberian Congress of Landscape Ecology



The main ecosystem types addressed in the contributions to the 5th Iberian Congress of Landscape Ecology





 iale2022.eu
 [@ialeEurope](https://twitter.com/ialeEurope)
 congress@iale2022.eu

a linked PhD course will be organised before and after the Congress



IALE 2022 European Landscape Ecology Congress

MAKING THE FUTURE, LEARNING FROM THE PAST

Author: Andrzej Affek

The IALE 2022 European Landscape Ecology Congress will take place from 11 to 15 July 2022, in Warsaw (Poland). The theme of the congress 'Making the future, learning from the past' highlights the potentials for shaping and co-creating the future landscape with a landscape ecological perspective by reflecting what we can learn from the past.

Call for Abstract is open now!

More than 30 symposia will be organised, structured in ten thematic groups. We welcome a wide variety of interesting, engaging and challenging topics. The description of the symposia as well as the submission procedure can be found on the website.

The *submission deadline is 28 January 2022*, notification about acceptance will be sent at 1 March 2022. The congress will be organised in a physical format that will be safe for participants. We expect the average congress fee to be around EUR 400. The fee will cover participation in sessions, lunches and coffee breaks, social events and mid-congress excursions, and will be reduced for IALE members, early-career scientists and non-high income countries. The final fee structure will be published with the opening of registration in March 2022.

We are looking forward to your participation in the congress and hope to welcome you all in Warsaw. Feel free to share this call widely among your colleagues and use the promotional material provided at the congress website.

More information:
www.iale2022.eu/

Important dates:
Opening for abstracts!

28 January 2022 -
Deadline for abstracts

1 March 2022 -
Early bird registration open

1 March 2022 -
Acceptance of abstracts

31 March 2022 -
Deadline early bird registrations

Looking very much forward to welcoming you all in Warsaw!

All information: www.iale2022.eu/

We would like to thank all our supporters in 2021 and we look forward to the year 2022

Authors: Werner Rolf & Uta Schirpke

This year, we received and processed about 30 new submissions, and five articles have been published – several manuscripts are still under review and expected to be published within the next few months. We would like to thank all the people who have supported our work. First, we would like to thank all reviewers (see list in the right column, in alphabetic order) for dedicating their valuable time and expertise during the review process. Furthermore, we would like to thank all IALE chapters that support our work, namely the regional chapter IALE-Europe and IALE-North America and the national chapters IALE-Chile, IALE-Denmark and ialeUK.

Furthermore, we are grateful for the support of our 19 editorial board members: Leila Mahmoudi Farahani (Australia), Veerle Van Eetvelde (Belgium), Jochen A. G. Jaeger (Canada), Cristian Echeverria (Chile), Dolores Armenteras (Colombia), Andreas Aagaard Christensen (Denmark), Hannes Palang (Estonia), Christoph Merz, Claus Dalchow, Dagmar Haase, Olaf Schroth, Stefan Heiland, Peter Weisshuhn (Germany), Emilio Padoa-Schioppa and Irene Petrosillo (Italy), Janez Pirnat (Slovenia), Simona R. Grădinaru (Romania), Audrey L. Mayer, and Jessica Price (USA). As we are continuously looking forward to complement and enhance our editorial board with further competences, please get in touch with us in case you are interested to become involved.

Reviewer Appreciation 2021:

Abel Atblada, Tariq Aziz, Mahsa Bazrafshan, Ingrid Belčáková, Teshome Betru, Elena Bukvareva, Pedro Cabral, Thomas Campagnaro, Iwona Cieślak, Graeme Dean, Iryna Dronova, Antonella Fatica, Sarah Gottwald, Simona Grădinaru, Ning Gu, Jochen Hack, Sebastian Klimek, Marcus Köhler, Vesna Kosorić, Dabitora Koumantiga, Jitendra Kumar, Ângela Lomba, Philip Lynch, Sreetheran Maruthaveeran, Botlhe Mathodi, Stoyan Nedkov, Emilio Padoa-Schioppa, Hannes Palang, Julia Palliwoda, Antonia Pfeiffer, Giuseppe Pulighe, Ana Isabel Queiroz, Maryam Saffariha, Kathrin Specht, John R. Taylor, Hana Vavrouchová, Edyta Woźniak, Nasim Yazdani

New Special Issue about “Syntheses from landscape-ecological research”

We are happy to announce a new „Living“ Special Issue “Syntheses from landscape-ecological research” aiming to build a bridge between research and practice. The Special Issue provides the opportunity to publish research results in a summarized way and to make the most important outcomes of the work accessible to researchers and practitioners. In particular, two types of research outcomes are welcome for submission to this special issue:

1. *Summary of thesis:* PhD, habilitation, and master candidates and graduates are invited to publish a summary of their thesis. The special issue is suitable to synthesize the outcomes of your thesis that have been already published in different articles as part of the cumulative thesis or to summarize more comprehensive work that has been elaborated as an monographic work.
2. *Project and research synthesis:* Research consortia and working groups are invited to submit a summary of their research and to give an overview of the most important insights and outcomes of research projects. It offers research groups and projects to publish target scientific outputs for knowledge brokerage, putting emphasis on theory-practice transfer and policy-making.



Submitted manuscripts may contain results that have been already published separately, but need to provide new insights by differently combining outcomes in order to develop further conclusions. For further details, see the Call for Papers: www.landscape-online.org/index.php/lo/Syntheses_Call.

We are looking forward to many new submissions in 2022, waiting to be published open access at www.landscape-online.org. We wish you all a relaxing wintertime and a happy and healthy New Year 2022! We hope to meet again at the upcoming congresses next year, such as the IALE European Landscape Ecology Congress in Poland or the 20 years anniversary congress of IALE Germany.

All the best,

Werner Rolf and Uta Schirpke

(Co-Editors-in-Chief)

on behalf of the Editors of Landscape Online and Executive Committee of IALE-Germany

Journal of Landscape Ecology: Call for papers

Authors: Petr Maděra, Markéta Šantrůčková, Ivo Machar

The Journal of Landscape Ecology is a fully reviewed scientific journal published by the Czech National Chapter of the Association for Landscape Ecology (IALE-CZ) since 2008. Currently, three issues and more than 20 articles are published annually. The journal is available in print (ISSN 1803-2427) and online as open access (ISSN 1805-4196) published by De Gruyter Open (<https://sciendo.com/journal/JLECOL>). The Journal has been indexed in SCOPUS (and many other databases) since 2013. The cite score is continuously increasing: 2021 – in the meantime 2.0; 2020 – 1.3; 2019 – 1.1; 2018 – 0.8; 2017 – 0.6 as well as SJR.

The Journal supports integration of knowledge from geo-, bio- and socio-sciences at the ecosystem and landscape level. Great emphasis is given to relationships between nature and culture including knowledge of ancient landscapes. The Journal publishes papers on spatial and temporal heterogeneity especially in the context of climate change and its impacts on terrestrial environment across adequate scale hierarchy. Expertise from the spheres of land-use planning and design, habitat and landscape typology, ecosystem management, biodiversity protection and ecological restoration, and rules of ecological processes are promoted. The scope of the Journal includes different landscapes and ecosystems of the world. Between 2019 and 2021, articles by authors from the following countries were published: Benin, Brazil, Canada, Colombia, Czech Republic, Egypt, Estonia, India, Indonesia, Iran, Kazakhstan, Malaysia, Mexico, Netherlands, Nigeria, Peru, Poland, Slovakia, Ukraine, USA.

Members of editorial board: Petr Maděra, Mendel University in Brno, CZ, Zdeněk Lipský, Charles University in Prague, CZ, Markéta Šantrůčková, The Silva Tarouca Research Institute for Landscape and Horticulture, Průhonice, CZ, Ivo Machar, Palacky University in Olomouc, CZ, Pavel Kovář, Charles University in Prague, CZ, Almo Farina, University of Urbino, Italy, Irina Goia, Babes-Bolyai University Cluj-Napoca, Romania, Rob H.G. Jongman, Wageningen, Netherlands, Marc J. Metzger, University in Edinburgh, UK, Dušan

Romportl, Charles University in Prague, CZ, Alena Salašová, Mendel University in Brno, CZ, Jerzy Solon, Polish Academy of Science, Poland, Richard Stiles, TU Vienna, Austria, Jaroslav Vojta, Charles University in Prague, CZ, Thomas Wrba, University of Vienna, Austria, Agnieszka Latocha, University of Wrocław, Poland, Robert Gerald Henry Bunce, Estonian University of Life Sciences, Tartu, Estonia.

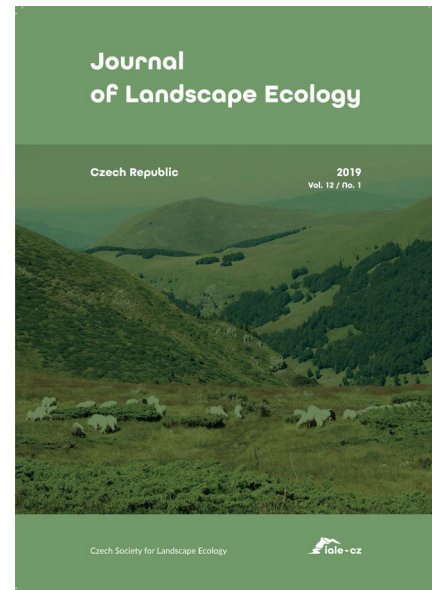
We are continuously looking forward to receiving good manuscripts.

Petr Maděra

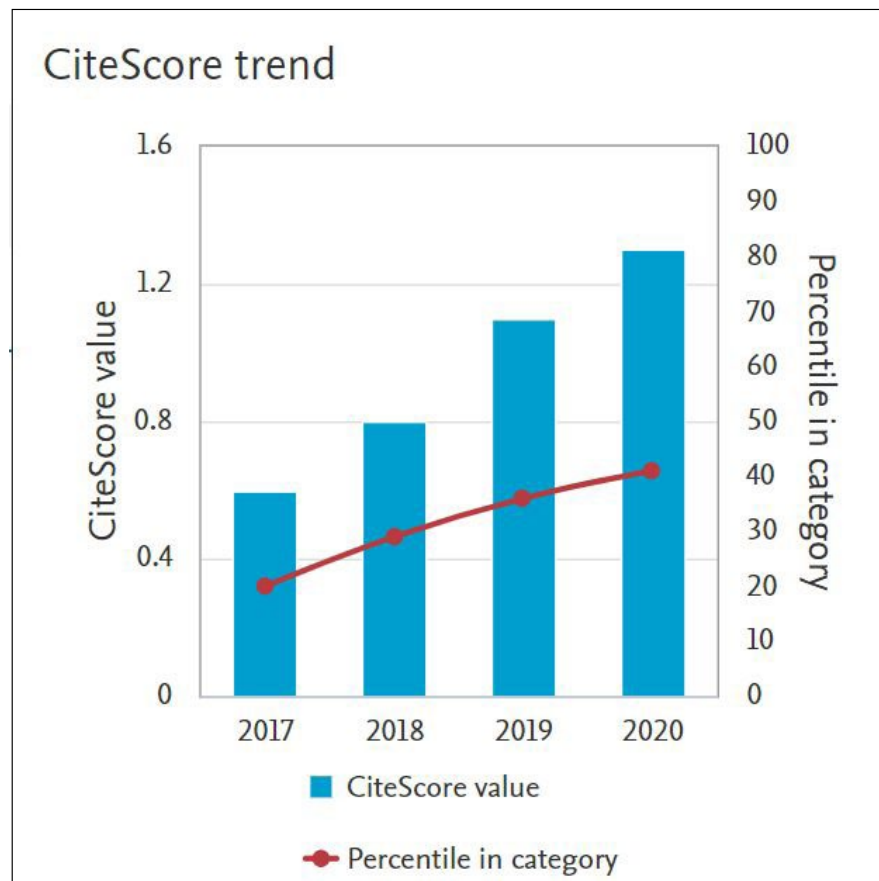
Editor-in-Chief Journal of Landscape Ecology

Markéta Šantrůčková, Ivo Machar

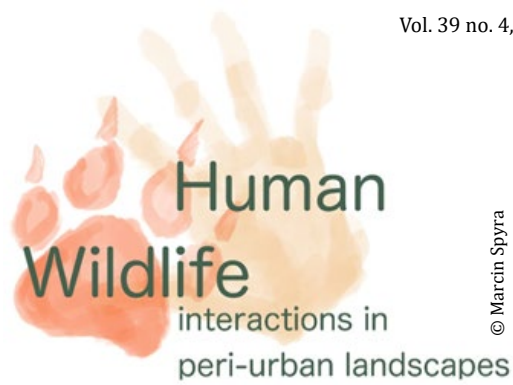
Executive Editors Journal of Landscape Ecology



CiteScore trend of the Journal of Landscape Ecology



Workshop about human-wildlife interactions in peri-urban landscapes



© Marcin Spyra

Authors: Dominik Kaim & Marcin Spyra

Nearly 50 participants took part in an online Global Land Programme (GLP) workshop on Governance of Human-Wildlife-Interactions (HWI) in Peri-Urban Landscapes (PULs), which took place 09.11.2021. The high number of interdisciplinary participants working on different continents and representing both science and practice indicated the importance of the topic among the scientific community. The workshop offered first a short introductory part, where the main issues were presented briefly by IALE/GLP members and the workshop organizers – Dr. Janina Kleemann and Dr. Marcin Spyra, as well as by the specialist in the topic of HWI, Dr. Hannes J. König. Then the preliminary results of the online survey on the policy

instruments connected to HWI taking place in PULs were presented by Tabea Roth. The interactive part of the workshop was composed of three sessions concerning: HWI (moderated by Dr. Dominik Kaim), peri-urban landscape (moderated by Dr. Marcin Spyra) and policy instruments used to solve HWI in PULs (moderated by Dr. Janina Kleemann). In each session, the participants used a wide range of interactive opportunities to share their opinions: pasted comments on white board, shared their opinions on chat and took part in an open discussion. All the options were eagerly used by the participants, that resulted in wide spectrum of feedback materials collected by the organizers. Among many take-home messages

collected in the workshop wrap-up, we could mention: peri-urban landscapes are offering new types of habitats, that makes them very attractive for wildlife; mammals are more commonly attributed to HWI taking place in peri-urban landscape than other species, and finally, that communication and cooperation is needed among different level of governance actors to tackle the existing problems of HWI in PULs.

Regarding communications – the workshop showed that great work in that field is done by the GLP International Programme Office represented here by Dr. Brigitte Portner, who made the workshop possible, popular and successful!

How to protect natural heritage of peri-urban open spaces? Author: Nica Claudia Caló & Marcin Spyra

Several forces, including how humans use open spaces, are deeply transforming landscapes. The dynamic process of peri-urbanisation plays a relevant role in those transformations through the expansion of artificial areas into natural, semi-natural or agricultural areas.

How does this dynamic process impact peri-urban open spaces and how does policy-making address constant peri-urban spatial transformation without endangering the natural heritage of open spaces are some of the main questions discussed by the authors of the open access paper “Protection of peri-urban open spaces at the level of regional policy-making: Examples from six European regions” published on the Journal Land Use Policy (www.doi.org/10.1016/j.landusepol.2021.105480) and authored by IALE members Marcin Spyra, Janina Kleemann, Nica Claudia Caló, Alina Schürmann and Christine Fürst.

Considering that peri-urbanisation and the associated land cover changes, land take, and land degradation are significantly affecting biodiversity and causing habitat loss and fragmentation of peri-urban ecosystems,



© Marcin Spyra

the paper aims at underlining the need to preserve the capacity of peri-urban open spaces to provide different services and safeguard landscape sustainability. Based on data from six different European regions involved in the implementation of the Interreg Europe Project RENATUR (www.interregeurope.eu/renatur/), the study analysed land cover changes related to peri-urban open spaces in those regions. The results showed that peri-urban open spaces are decreasing in all case study regions but with different scale and dynamics over time. Mostly (non-irrigated)

arable land has been transformed into non-peri-urban open space. Besides that, the study identified fifteen policy improvements that are suitable to support the protection of peri-urban open spaces at the level of regional policy-making. In particular, a potential for improving the regulatory instruments and the usefulness of multi-level governance has been indicated. Eventually, some recommendations for regional policy instruments to improve the protection of peri-urban open spaces have been drawn up in the paper.

Upcoming IALE Conferences

11-15 July 2022

IALE 2022 European Landscape Ecology Congress

Making the future, learning from the past
Warsaw, Poland

More information on iale2022.eu

10-15 July 2023

IALE World Congress 2023: Transboundary Resource Management, Climate Change and Environmental Resilience

Nairobi, Kenya

More information on landscape-ecology.org

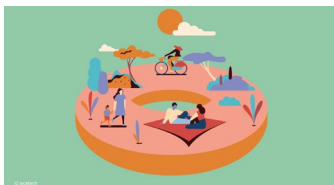
ESP

Ecosystem Services Partnership

Upcoming conferences of our partner organisation ESP (Ecosystem Service Partnership)

- 3rd ESP Africa Conference, **first half of 2022**, Musanze, Rwanda (hybrid)
- 2nd ESP MENA Conference, **2022**, Agadir, Morocco
- 4th ESP Europe Conference, **10-14 October 2022**, Heraklion, Crete, Greece
- ACES-ESP Conference, **postponed to 12-16 December 2022**, USA

Upcoming conferences with topics related to Landscape Ecology



25-27 January 2022

FEDa International Conference

Biodiversity and Human Well-Being – Europe's Role in Shaping Our Future

digital-only conference

More information on www.feda.bio/en/2022-conference



The IALE Bulletin is distributed several times per year to the members of IALE. IALE - the International Association for Landscape Ecology was founded in 1982 to promote communication between scientists, planners and interdisciplinary scientific research.

IALE Executive Committee:

President: Robert Scheller (2019-2023), North Carolina State University, North Carolina State University, Campus Box 7106, Raleigh, NC 27695-7106 USA, rschell@ncsu.edu; **Secretary General: Peilei Fan** (2019-2023), Michigan State University, 201M Human Ecology Building, 552 West Circle Drive, East Lansing, MI 48824, USA, fanpeilei@msu.edu; **Treasurer: Irene Petrosillo** (2019-2023), University of Salento, 73100 Lecce, Italy, irene.petrosillo@unisalento.it; **Communication Officer and Deputy Secretary General: Bastian Steinhoff-Knopp** (2019-2023), Leibniz University Hannover, Schneiderberg 50, 30167 Hannover, Germany, steinhoff-knopp@phygeo.uni-hannover.de; **Past President: Christine Fürst** (2019-2023), Martin Luther University Halle-Wittenberg, Von-Seckendorff-Platz 4, 06120 Halle (Saale),

Germany, christine.fuerst@geo.uni-halle.de;

Vice Presidents and their role in the Executive Committee:

Dolors Armenteras (2019-2023; Latin America); National University of Colombia, Av. Carrera 30 # 45-03, Edif. 476 - Facultad de Ciencias, Bogotá D.C., Colombia, darmenterasp@unal.edu.co; **Henry Bulley** (2019-2023; Africa; Tasks: Outreach and communication), City University of New York, 199 Chambers Street, New York, NY 10007, USA, hnbulley1@gmail.com; **Benjamin Burkhard** (2015-2019; Europe), Leibniz University Hannover, Schneiderberg 50, 30167 Hannover, Germany, burkhard@phygeo.uni-hannover.de; **Cristian Echeverria** (2017 – 2025; Latin and South America; Tasks: Networking in Latin American countries, students and young researchers network), Universidad de Concepcion, Victoria 631, Barrio Universitario Concepción, Chile, cristian.echeverria@udec.cl; **Markéta Šantrůčková** (2021 – 2025), Research Institute for Landscape and Horticulture in Czechia, Květnové nám. 391, 252 43 Průhonice, Czech Republic, santruckova@vukoz.cz; **Weiqi Zhou** (2021 – 2025), State

Key Laboratory of Urban and Regional Ecology, Research Center for Eco-Environmental Sciences of the Chinese Academy of Sciences, 18 Shuangqing Road, Haidian District, Beijing, China 100085, wzhou@rcees.ac.cn;

Chair of the Council:

Danilo Boscolo, Universidade de São Paulo, Av. Bandeirantes, 3900 - CEP 14040-901 - Bairro Monte Alegre - Ribeirão Preto - SP - Brasil, danilo.boscolo@gmail.com.

IALE International on the Internet:
www.landscape-ecology.org

Bulletin Deadline Vol. 40 no. 1:
15.01.2022

PLEASE: Send your contributions to the Bulletin Editor **Bastian Steinhoff-Knopp:**

steinhoff-knopp@phygeo.uni-hannover.de