

iala BULLETIN

INTERNATIONAL ASSOCIATION FOR LANDSCAPE ECOLOGY

Dear IALE Community,

The year 2022 started for many of us with a hope for a return to normality - an end to the covid pandemic seemed to be in view and many of us were hoping to see colleagues and friends again at conferences. But this year, the major regional IALE conferences in North America and Europe will again be held online. Tragically, the reason for the switch to an online format in Europe is not the corona pandemic - the

organisers in Warsaw have decided against it in light of the Russian government's war of aggression against Ukraine - you will find a news item on this in this bulletin. The IALE executive committee clearly condemns the attack on Ukraine in its statement - just as clearly as a group of Russian IALE members. You can also read about this in this bulletin. Our thoughts are with the people in Ukraine who are going

through hard times and we stand together for a peaceful co-existence on earth. Also in this bulletin we highlight the new IALE Meeting Code of Conduct, the financial report for 2021, news from our flagship journal *Landscape Ecology* and much more.

Enjoy reading
Bastian Steinhoff-Knopp
IALE Communication Officer

IALE Statement on the current situation in Ukraine

Statement of the IALE Executive Committee

The International Association for Landscape Ecology (IALE) is deeply troubled by the Russian government's attack on Ukraine, the escalating violence, and the disastrous impact on people affected by the conflicts. Our thoughts are with the people of Ukraine at this difficult time.

Global climate change, biodiversity loss and intensifying human activities have already caused the landscape changes to become a global threat. Warfare, besides tremendous suffering it brings to people, inexorably further harms both natural

and cultural landscapes, with permanent direct consequences to landscape's abilities to guarantee safe and healthy lives for nature and the peoples depending on it. It will bring cascading long-term and large-scale consequences to all humankind, also beyond those directly in contact with the conflict.

IALE is the worldwide organization for landscape ecologists, with a primary mission to promote global collaboration. In times of conflicts and crises, IALE as an organization will continue to support



the landscape ecologist community. IALE encourages its members and chapters to separate individual scientists from the adverse actions of their home countries/governments, stay united, and treat each other with empathy and mutual respect. IALE is fully committed to global scientific collaboration and dialogues, especially those affected by conflicts and war anywhere in the world, to support a peaceful co-existence on Earth.

Statement of a group of IALE-Russia chapter members

Authors: A group of IALE members from Russia (see below)

We, the members of Russian chapter of IALE International, condemn the war in Ukraine unleashed by Russian Government. We will do our best to influence Russian public opinion which was damaged by long lasting propaganda in state-controlled media. We'll consistently persuade Russian citizens that the bloodshed, for which Putin's regime bears full responsibility, undermines all moral standards and threatens global future.

Tatiana Kharitonova
Alexander Prishchepov
Svetlana Solodyankina
Alexander Abolits
Maxim Bobrovsky
Robert Sandler'sky
Anton Shkaruba
Ksenia Merekalova
Dmitry Marinskikh
Oleg Zheleznyy
Alexander Karandeev
Aleksander Khoroshev



**INVITATION TO “LANDSCAPE ECOLOGY”
SUMMER SCHOOL SERIES (2021 – 2023)**
Sponsored by The Volkswagen Foundation



Theme: Implementing Landscape Ecology for Improved Sustainability and Societal Equity of Social-Ecological Systems in Sub-Saharan Africa (PLEASE-SES)

Format: **Webinar** – Online
Summer School – Makerere University, Kampala, Uganda

Organizers: **Prof. Dr. Christine Fürst**, Martin Luther University Halle-Wittenberg, Germany
Dr. Yazidhi Bamutaze, Makerere University, Uganda
Dr. Henry N. N. Bulley, BMCC, City University of New York, USA

More Information: info@ialeafrica-summer-school.com



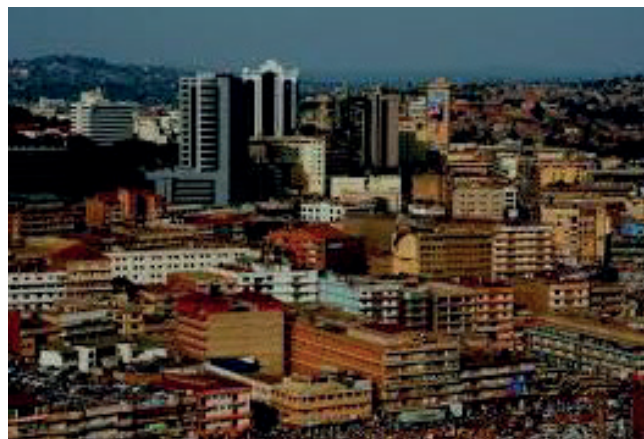





Summer School II (2022) Cities and Urban Ecological Resilience

1. Introduction

Issues of social-ecological sustainability, systems resilience and social equity benefiting from nature's contributions to people continue to occupy a prominent position in the global development discourse of tropical regions particularly in Sub-Saharan Africa (SSA). The dominant narrative paints a dismal picture in SSA and avers that ecological systems are increasingly undergoing enormous degradation linked to natural and human induced processes with adverse implications on local and regional populations whose livelihoods are strongly dependent on environment and natural resources. Feedbacks through increasing intensity and extent of natural hazards, stagnant or declining agricultural yields, and in consequence increasing migration exemplify the magnitude of current impacts of interwoven natural and societal changes at global scale. These have been accelerated by climate change with new prospectives of a 50C global warming instead of only 1.50C as intended. Increasing climate variability and tremendous demographic changes jeopardize sustainable development and undermine the suitability of current policy, planning and governance approaches to manage them successfully. A strong desire exists in addressing these issues as seen in the tenets of the Global Development Agenda 2030 and the Africa Union Agenda



2063. Landscape ecology principles provide a framework for sustainable land use planning and natural resource management. Landscape Ecology as an interdisciplinary marriage between geography, biology, ecology and social sciences provides a valid scientific foundation to harness the role of biodiversity for a sustainable livelihood and suggest adequate governance instruments to achieve the SDGs. The VW-summer school series intends to train participants on the knowledge and skills of how landscape ecology can contribute to improve the status of achieving the SDGs and the AU Agenda 2063 objectives. The summer school will entail joint engagement of scientists and practitioners from urban, regional and national planning as well as from governmental institutions who are engaged in socio-ecological system

development from multiple perspectives.

2. Target group

Each summer school is planned for about 30 participants to be selected from African countries and Germany. The summer school will be a mixture of early career and young scientists as well as established scholars and input providers from practice, such as policy makers/representatives of governmental institutions preparing and implementing environmental policies, planners, actors from business and economy and local knowledge holders. For the young scientists, the focus will be on PhD and postdoctoral students from African and German institutions.

3. Mode of Summer School II****

The 1st summer school will consist of three webinars and a physical meeting which will take place in Uganda in July 2022. The webinars will cover the theoretical underpinning of landscape ecology with a view bringing all the participants to the same level of understanding of landscape ecology and its principles. The place and

space of landscape ecology in the global development agenda 2030 will be explained and discussed.

Webinar 1: *May 2022*

Webinar 2: *June 2022*

Physical meeting (Kampala, Uganda):
18 -24 July 2022

****Note: All sessions of Webinar and physical meeting will be recorded.

4. Requirements

- Be a PhD student, Postdoctoral student or early career scientist from based in Sub Saharan Africa or Germany. Landscape ecology scientists from Sub Saharan Africa may also be considered
- Consistently participate in all planned webinar series
- Motivation and interest in Landscape Ecology, Cities and Urban Ecological Resilience
- Brief CV (Maximum 2 pages)

5. Application Procedure and Deadline

Applications to participate in the first summer school should be submitted online at vwsummerschool.mak.ac.ug. The application deadline is *April 22, 2022*. Selected applicants will be required to attend Webinars during which time final selection will be made.

6. Funding

The summer school series are fully funded by the Volkswagen Foundation, which will cover costs for travel, accommodation, Visa and meals physical meeting in Kampala in *July 2022*.

7. Contacts

More information about the summer school can be obtained from the website: www.vwsummerschool.mak.ac.ug or by sending an email to: info@vwsummerschool.mak.ac.ug



IALE 2022 European Landscape Ecology Congress

MAKING THE FUTURE, LEARNING FROM THE PAST

Warsaw (online)
11-15 July 2022

IALE 2022 changed to an online meeting

Authors: IALE 2022 Organisation Committee

From the very beginning we wanted the IALE European Landscape Ecology Congress to be a meeting that would give the possibility of creative exchange of views, lively discussion, network building and social events among friends and colleagues. We planned to organise it in Warsaw, the part of Europe where the influences of Western and Eastern European scientific perspectives intersect.

In March 2021, we decided to postpone the Congress by one year, because we were determined to have an in-person event and hoped that the pandemic would be contained by July 2022. When it looked as though there was a chance to meet safely,

war broke out at our borders. The war that shocks the world and with each passing day increases the unimaginable suffering of Ukrainians and the destruction of their homeland.

Considering the dangers of the Russian invasion, the uncertainty of tomorrow and the obvious need to help millions of refugees arriving in Poland, we regretfully decided, in consultation with the IALE-Europe Executive Committee, to change the format of the Congress to an online meeting. We were primarily guided by the care for the safety of Congress participants and the sense of inadequacy of cheerful networking in these very tragic

days. This move is also a response to the numerous and understandable fears from participants related to travelling so close to the border with Ukraine, perceived by some participants almost as a front zone. We will do our best to make the online meeting interesting, interactive and valuable for everyone. We plan to open registration on April 1st, with an early bird deadline on April 30th, and a deadline for contributors on May 31st. The Congress fee will be 100/50 Euro (discount for students and IALE members). We encourage the participants to allocate the funds saved on travel and accommodation to help refugees from Ukraine.

IALE FINANCIAL REPORT FOR 2021

Author: Irene Petrosillo (IALE World Treasurer)

The administrative management of the IALE finances for 2021 has been developed and monitored systematically. The initial budget given by € 66.938,21 and the final budget of € 71.869,85 highlight a positive balance of € 4.931,64. In particular, the incomes are related to the membership fees, included the subscriptions to Landscape Ecology (€ 4.931,64). On the other side, the total IALE expenses resulted in € 8.948,36,

where € 6.578,00 have been dedicated to the support of IALE Chapters and Working Groups during 2021. The present balance has been closed with a reservation of € 40.000,00 for the next World Congress. Given this, we have dedicated € 18.000,00 to support new chapters and working groups in 2022.

The IALE Executive Committee as usual agreed on the refund of 20% of membership

fees 2022 paid by IALE Chapters within the end of June 2022. We thank the IALE Chapters that are in compliance with the payment of membership fees and in line with the deadlines, because this guarantees the financial resources to support the activities of new IALE Chapters and working groups. The IALE Executive Committee use Zoom calls to meet with the aim to save costs.

		IN	OUT	TOTAL	
Starting Balance 01.01.2021					€ 66 938.21
Income from 01.01.21 to 31.12.21					
Subtotal Region fee	Region fee	€ 12 855.00	€ 368.00		
		€ 12 855.00	€ 368.00	€ 12 487.00	
	Individual fee	€ 390.00	€ 25.86		
	IALE IRAN individual fee	€ 0.00	€ 10.00		
Subtotal Individual fee		€ 390.00	€ 35.86	€ 354.14	
Income from regional and individual fees		€ 13 245.00	€ 403.86	€ 12 841.14	
	LE subscription	€ 635.00	€ 0.00		
Subtotal LE subscription		€ 635.00	€ 0.00	€ 115,70	
Administration costs			€ 0.00		
Bank costs			€ 201.50		
Website and Bulletin			€ 1 765.00		
Financial Supports (loan and donations) to IALE Regions			€ 6 578.00		
Total transactions 31.12.19		€ 13 880.00	€ 8 948.36	€ 4 931.64	
Balance without reservations 31.12.2019					€ 71 869.85
Reservations	Next World Congress		€ 40 000.00		
	20% refund early registration 2020		€ 889.00		
	20% refund early registration 2021		€ 312.00		
	reservation IALE IRAN		€ 1 990.00		
Subtotal reservations			€ 43 191.00		
Balance with reservations (31.12.21)					€ 28 678.85

Deadlines for chapters related to member fees for 2022

Author: Irene Petrosillo (IALE World Treasurer)

Deadlines	For
<i>2022, March 31</i>	the list of Landscape Ecology subscriptions for 2022, only for printed version, has to be sent to the treasurer: irene.petrosillo@unisalento.it
<i>2022, June 30</i>	early membership registration* and Landscape Ecology subscription (PRINT) payments (the list of paying members, by specifying full or student members, and LE subscribers has to be sent to the treasurer: irene.petrosillo@unisalento.it). ALL members receive a free digital version of Landscape Ecology.
<i>2022, December 31</i>	registration (the list of paying members has to be sent to the treasurer: irene.petrosillo@unisalento.it)

* The 20% refund for early registration considers June 30 as the reference deadline.

The payments can be done through a bank transfer - the bank account is in ABN-AMRO Bank, or through PayPal (for details send an e-mail to the treasurer: irene.petrosillo@unisalento.it)

The costs are exactly the same as 2021

For Chapters in regular income Countries:

- Full membership incl. free digital version of Landscape Ecology (€ 20)
- Student membership incl. free digital version of Landscape Ecology (€ 10)
- Full membership incl. printed Landscape Ecology (US\$ 100 or € 95)
- Student membership incl. printed Landscape ecology (US\$ 70 or € 65)

For Chapters in low income Countries:

- Full low income membership incl. free digital version of Landscape Ecology (€ 10)
- Student membership incl. free digital version of Landscape Ecology (€ 5)
- Full membership incl. printed Landscape Ecology (US\$ 95 or € 85)
- Student membership incl. printed Landscape Ecology (US\$ 65 or € 60)

IALE Meeting Code of Conduct

Authors: IALE Diversity and Inclusion (D&I) Committee | Approved by the IALE Executive Committee on 11.03.2022

About:

IALE sponsors events and meetings that are welcoming, respectful, inclusive, and collaborative. We believe that the best way to advance knowledge is through the open, free, and respectful exchange of ideas. IALE does not tolerate behavior that may intimidate or threaten others. IALE's Meetings and Events Code of Conduct applies to all events sponsored by IALE, including the IALE World Congress, meetings that receive funding from IALE, and affiliated events connected with an IALE meeting or event, whether in public or private facilities, virtual or in-person, as well as any communication related to, or during a meeting on social media platforms. This Code of Conduct must be followed by meeting attendees, meeting organizers, contractors, volunteers, and all other service providers associated with the meeting. Acknowledgement and agreement to abide by the IALE Meetings Code of Conduct is required at registration for any in-person or virtual event.

Expected behavior:

- Treat everyone with respect and consideration.
- Communicate thoughtfully with others and be considerate of views and opinions that are different from your own, in all situations, including but not limited to: while presenting, while attending talks and events, in one-on-one conversations, at exhibitor tables, and within group discussion.
- Be respectful in your critique of ideas, and critique ideas rather than individuals.
- Be mindful of your surroundings, your fellow participants, and unacceptable behavior as outlined below.
- Respect the rules and policies of all venues associated with the meeting.
- Follow the rules for reporting, listed below, if you witness a situation that violates the Code of Conduct, or if you notice someone in distress.

Unacceptable behavior:

- Criminal offenses.
- Participation, facilitation, or promotion of harassment, intimidation or discrimination behaviors at the

meeting, event, or via social media associated with the meeting, event, or other associated activities organized or sponsored by IALE.

- Physical, emotional, or verbal harassment of any attendee, speaker, volunteer, exhibitor, IALE leadership, service provider, or other meeting or event guest.
- Inappropriate comments related to gender, gender identity or expression, sexual orientation, disability, physical appearance, body size, race, religion, national origin, socioeconomic status toward any attendee, speaker, volunteer, exhibitor, or service provider.
- Inappropriate use of nudity and/or sexual images in public spaces or in presentations.
- Threatening, bullying or stalking any attendee, speaker, volunteer, exhibitor, IALE leadership, service provider, or other meeting or event guest.
- Recording or taking photography of a presenter, a presentation, or a poster without the presenter's explicit permission.
- Disruption of talks at oral or poster sessions, in person or virtual, in the exhibit hall or at other events at the meeting venue, hotels, or other venues associated with the meeting.
- Publicly sharing the location or contact information of any other participant beyond the information shared in any meeting materials.

Consequences for unacceptable behavior:

- Anyone requested to stop unacceptable behavior is expected to comply immediately.
- Meeting organizers (or their designee) or security may take any action deemed necessary and appropriate, including immediate removal from the meeting, event, or organizing committee without warning or refund.
- Any illegal behavior will result in contacting the appropriate authorities.
- Each chapter reserves the right to prohibit attendance at any future meeting and/or revoke membership. IALE-World reserves the right to

revoke global membership and ban attendance at the World Congress.

Reporting unacceptable behavior:

If you are the subject of unacceptable behavior or have witnessed any such behavior, please immediately follow these steps:

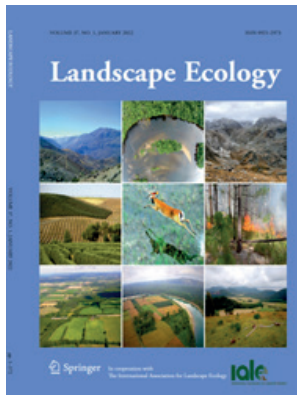
- First, remove yourself from the situation and find a safe space.
- If you experience or witness behavior that constitutes an immediate or serious threat to public safety, or a medical or criminal emergency, contact event security and/or local emergency response authorities. Contact information for these entities will be provided to meeting attendees by the meeting organizers.
- IALE encourages participants to report all incidents or suspected incidents of unacceptable behavior. Incidents can be reported anonymously via this form or via email to iale.diversity.committee@gmail.com. Information on how to anonymously report incidents will be provided to all meeting attendees by the meeting organizers.
- All reports will be forwarded to the Diversity and Inclusion liaison who will handle Code of Conduct concerns with professionalism, sensitivity and confidentiality.
- Resulting actions and consequences will be determined on a case by case basis. Please see above for consequences that may result from incidents in violation of the code of conduct.
- Depending on the nature of the issue, additional information, security, or local police may be needed to address the situation appropriately.

IALE funding in 2022

Author: Bastian Steinhoff-Knopp | IALE Executive Committee

In 2022, IALE World is funding eight requests for support from chapters and working groups with a total volume of over EUR 15,000. The following table gives an overview of the funded events, congresses and student trainings.

Chapter or Working Group	Type of Request	Summary
<i>IALE-Chile</i>	Student Training	Field work training in landscapes of Southern Chile: A trip to learn to share what and how we see.
<i>IALE-Africa</i>	Student Training	Hybrid training event ahead the IALE 2023 World Congress for students and practitioners from the IALE Africa chapter. The participants will include 20 from Kenya and 25 from across Africa to participate virtually.
<i>IALE-Europe</i>	Conference	Support the participation of early career scientists and citizens of non-high income countries in IALE 2022 European Congress.
<i>IALE-Europe</i>	Student Training	Support of the next IALE-Europe PhD Course Landscape Ecology – From pattern and process to people and action.
<i>Biocultural Working Group</i>	Event / Training	Funding for Workshops on past, present, future of biocultural landscape and seascape.
<i>IALE-Argentina</i>	Conference	Financial support for the next Argentina Ecology Meeting (RAE)
<i>IALE-North America</i>	Conference	Support the participation of early career scientists and scientists from groups with traditionally underrepresented backgrounds in IALE-NA 2022 Conference (Virtual Travel Awards for registration and any internet connectivity fees)
<i>IALE-Italy</i>	Event	Event to launch a long-term project opened to the IALE Community worldwide, with the aim to discuss the environmental impacts social inclusion of in-person conferences in a collective and inclusive way.



Landscape Ecology Board Members among the World's Top 2% Scientists 2021

Author: Jianguo Wu

A team of researchers at Stanford University, in collaboration with Elsevier, has recently published the list of the **World's Top 2% Scientists 2021**^[1]. The list includes more than 160,000 people selected from more than 8.8 million active researchers worldwide. Using Elsevier's Scopus bibliometric database and recognizing 22 scientific fields and 176 subfields, this ranking is based on a composite indicator that measures scholarly impact and accounts for the priority of first-authored

and single-authored papers, as well as addressing the issues of "paper mills" and self-citation^[2].

A total of 35 members of the advisory and editorial boards of the journal, **Landscape Ecology**, are included in this ranking. Their respective rankings among the top 2% of scholars in all disciplines and within their primary fields are shown here, for both single year (2020) and career-long academic impact.

References:

1. August 2021 data-update for „Updated science-wide author databases of standardized citation indicators“, <https://elsevier.digitalcommonsdata.com/datasets/btchxktyw/3>.
2. Ioannidis JPA, Boyack KW, Baas J (2020) Updated science-wide author databases of standardized citation indicators. *PLoS Biol* 18(10): e3000918. <https://doi.org/10.1371/journal.pbio.3000384>.

Landscape Ecology Board Members among the World's Top 2% Scientists 2021								
		Single Year (2020) Impact Ranking			Career-Long Impact Ranking			
		Ranking in All Fields	Major Field	Ranking in Major Field	Ranking in All Fields	Major Field	Ranking in Major Field	
Editor-in-Chief	Wu, Jianguo	628	Ecology	17 of 53,981	3,091	Ecology	59 of 53,981	
	Cumming, Graeme S.	4,824	Ecology	139 of 53,981	18,521	Ecology	315 of 53,981	
Associate Editor	Fu, Bojie	1,641	Ecology	49 of 53,981	12,732	Ecology	227 of 53,981	
Reviews Editor	Jenerette, G. Darrel	69,668	Ecology	1,406 of 53,981				
Former Editor-in-Chief	Gardner, L. Robert				94,673	海洋生物学	777 of 42,163	
	Mladenoff, D. J.	61,724	Ecology	1,257 of 53,981	32,352	Ecology	561 of 53,981	
Advisory Board Members	Fortin, Marie Josée	25,979	Ecology	592 of 53,981	23,620	Ecology	397 of 53,981	
	Hobbs, Richard J.	2,115	Ecology	68 of 53,981	2,322	Ecology	45 of 53,981	
	Lambin, Eric F.	1,636	Ecology	48 of 53,981	3,170	Ecology	64 of 53,981	
	Levin, Simon A.	748	Ecology	19 of 53,981	592	Ecology	9 of 53,981	
	Opdam, Paul	42,154	Ecology	875 of 53,981	51,594	Ecology	867 of 53,981	
	Turner, Billie L.	6,402	Geography	25 of 15,978	9,187	Ecology	20 of 15,978	
	Turner, Monica G.	1,668	Ecology	52 of 53,981	1,789	Ecology	30 of 53,981	
	Wiens, John A.	12,456	Ecology	307 of 53,981	3,549	Ecology	71 of 53,981	
		Batory, Peter	67,305	Ecology	1,364 of 53,981			
		Bennett, Andrew F.	51,721	Ecology	1,081 of 53,981	40,229	Ecology	692 of 53,981
Editorial Board Members	Burgl, Matthias	58,781	Ecology	1,197 of 53,981				
	Chen, Jiquan	35,402	Ecology	753 of 53,981	74,098	Ecology	1,181 of 53,981	
	Cushman, Samuel A.	6,645	Ecology	180 of 53,981	19,165	Ecology	327 of 53,981	
		Footy, Giles M.	1,344	Geological & Geomatics Engineering	6 of 52,403	1,476	Geological & Geomatics Engineering	2 of 52,403
		Gustafson, Eric J.	49,654	Ecology	1,035 of 53,981	42,858	Ecology	726 of 53,981
		Haase, Dagmar	4,692	Ecology	136 of 53,981	30,191	Ecology	523 of 53,981
		He, Chunyang	51,811	Geological & Geomatics Engineering	409 of 52,403	236,539	Geological & Geomatics Engineering	1,010 of 52,403
		He, Hong S.	90,738	Ecology	1,751 of 53,981	95,464	Ecology	1,488 of 53,981
		Henebry, Geoffrey M.	87,862	Geological & Geomatics Engineering	695 of 52,403	113,605	Geological & Geomatics Engineering	462 of 52,403
		Herzog, Felix	65,539	Ecology	1,333 of 53,981	101,426	Ecology	1,595 of 53,981
		Krauss, Jochen	70,733	Ecology	1,420 of 53,981			
		Metzger, Jean Paul	15,521	Ecology	367 of 53,981	36,020	Ecology	623 of 53,981
		Peng, Jian	22,852	Ecology	525 of 53,981			
		Peterman, William E.	105,116	Ecology	1,962 of 53,981			
		Pijanowski, Bryan C.	48,393	Ecology	1,005 of 53,981	98,121	Ecology	1,538 of 53,981
		Seppelt, Rolf	59,998	Ecology	1,221 of 53,981	105,575	Ecology	1,665 of 53,981
		Verburg, Peter H.	2,302	Ecology	81 of 53,981	7,492	Ecology	134 of 53,981
		Wiegand, Thorsten	75,586	Ecology	1,511 of 53,981			
	Zhou, Weiqi	15,969	Ecology	379 of 53,981	90,748	Ecology	1,420 of 53,981	

2021 Best Article Award Journal Landscape Ecology

Author: Landscape Ecology Editorial Board

The Best Article Award is awarded annually to the best article published in *Landscape Ecology* in the previous calendar year. The best article is selected by the Landscape Ecology Editorial Board based on the following criteria:

- **Relevance:** The article's subject matter is immediately relevant to the key topics in landscape ecology;
- **Scientific rigor:** The article has interesting and important research questions clearly articulated, proper methods adequately described and rigorously implemented, and unambiguous conclusions sufficiently supported by results presented;
- **Breakthrough/Innovation:** The article presents a new theoretical and methodological development or ground-breaking findings through innovative applications of landscape ecological principles and methods;
- **Originality and literature:** The article is original in terms of the research reported and shows an adequate awareness of the primary literature immediately relevant to the subject matter;

- **Quality of writing:** The article is well organized and written, with clarity, accuracy, and readability.

The winner receives:

1. A voucher for complimentary access to any Springer publication in eBook form (value of 250 Euros/US dollars)
2. Article made freely accessible for up to 8 weeks on SpringerLink.

And the 2021 Best Article Award in Landscape Ecology goes to...

Resasco, J., Fletcher, R.J. Accounting for connectivity alters the apparent roles of spatial and environmental processes on metacommunity assembly. *Landsc Ecol* 36, 1089–1099 (2021). (freely accessible until May 1, 2022)

Honorable Mentions:

- Santos, M.J., Smith, A.B., Dekker, S.C. et al. The role of land use and land cover change in climate change vulnerability assessments of biodiversity: a systematic review. *Landsc Ecol* 36, 3367–3382 (2021). (Open Access)

- Andrade, R., Franklin, J., Larson, K.L. et al. Predicting the assembly of novel communities in urban ecosystems. *Landsc Ecol* 36, 1–15 (2021).
- Jeanneret, P., S. Aviron, A. Alignier, C. Lavigne, J. Helfenstein, F. Herzog, S. Kay, and S. Petit. Agroecology landscapes. *Landsc Ecol* 36:2235–2257 (2021). (Open Access)
- Casquin, A., Dupas, R., Gu, S. et al. The influence of landscape spatial configuration on nitrogen and phosphorus exports in agricultural catchments. *Landsc Ecol* 36, 3383–3399 (2021).

Congratulations to these authors!

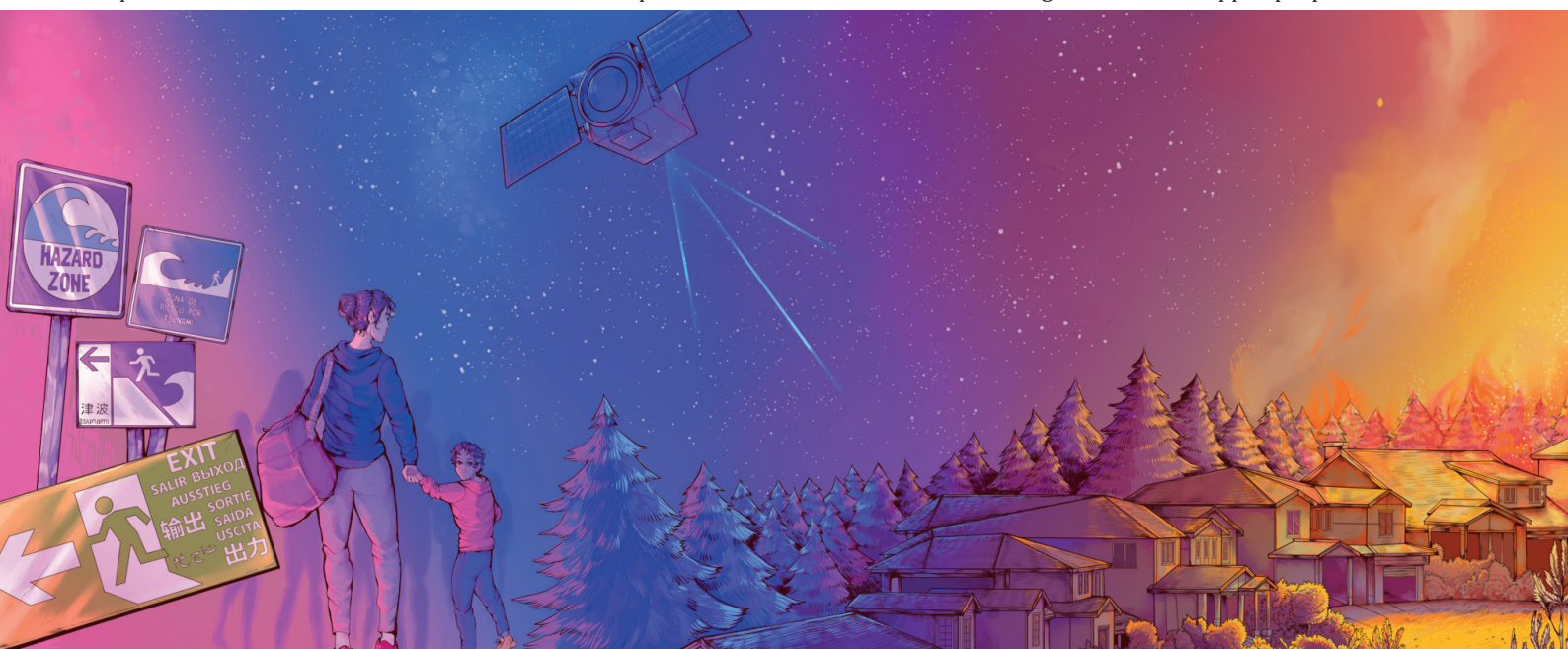
Fire Resilient Landscapes

Author: Carolina G. Ojeda

Yearly, wildfires around the world are one of the most dangerous and unpredictable hazards, damaging urban infrastructure and threatening lives. However, advances in satellite images analysis, machine learning, and people's awareness about prevention in rural-urban interfaces

could significantly reduce the amount of uncertainty. The objective of this proposal is to communicate the science behind wildfire's hazard analysis through 6 graphic pieces for general knowledge through infographics and illustrations. These pieces will be available for free

on a multilingual web page (www.fire-resilient-landscapes.github.io) and will be distributed on social media. Also, this proposal will include relevant information about preparedness for disadvantaged groups from metropolitan areas such as migrants or handicapped people.



Report: Working Group Spatial Analysis of Organisms in the Environment

Author: Working Group Spatial Analysis of Organisms in the Environment

Spatial ecology deals with the spatial distribution of organisms and a general objective of spatial analysis is to reveal the relationship between observed spatial distributions of species and the mechanisms underlying these spatial distributions. The recent advances in analysing spatial patterns of organisms in spatial ecology have greatly contributed to better understanding the distribution of organisms in space and time.

A prerequisite for exploring the ecological information provided by spatial distributions of organisms is to precisely describe the spatial structure of point patterns with statistical methods. Over the past decades, statisticians have developed structurally different summary statistics for this purpose. Moreover, rapid advances in computer science and technology have resulted in an increased application of spatial statistics. In addition, development of remote sensing and geographic

information system (GIS) technology has led to the identification of spatiotemporal patterns of organisms and has increased the possibility to identify how human activities have influenced animal and plant habitats. Consequently, ecologists have started to introduce spatial variation and complexity of ecosystems into their analyses, including changes of spatial patterns over time.

Our Working Group serves as a forum to develop application-specific approaches for the use of spatial analysis in ecological studies. We perform the following work:

- Reveal the importance of the topic and increase the application of spatial analysis among scientists working on ecological dynamics and processes in terrestrial ecosystems
- Organize symposia at IALE World or regional meetings where we can explore opportunities for joint research projects between

statisticians and ecology scientists.

- Set up workshops on related topics (e.g., application of MATLAB, ArcGIS, and R Software such as “Spatial Statistics Tools” in ArcMap and “SPATSTAT” package in R to different topics of spatial ecology)
- Develop and prepare publications (e.g., special issues in journals, booklets) directly focusing on the topic

The widespread application of spatial analysis in ecological studies makes it possible to consider special parts in IALE World Congresses or related topics in IALE Annual Conferences and prepare special issues to be published by technical journals (e.g., Ecological Modelling, Spatial Statistics).

All interested colleagues are warmly welcome to contact:

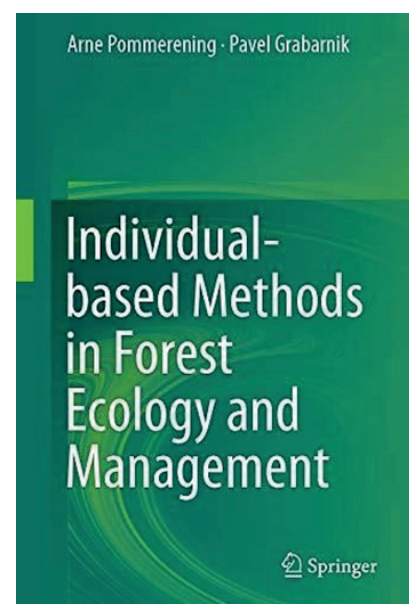
Yousef Erfanifard (erfanifard(at)ut.ac.ir)

Letter from the Working Group leader

One of the members of our WG has recently written a book entitled “Individual-based Methods in Forest Ecology and Management” published by Springer. Landscape ecology in forests and woodlands is an integration of structurally different fields. The book put the main ones together to provide practical approaches that can be well implemented in sustainable management of forest ecosystems and their assessment from ecological point of view. The book is consisted of seven chapters and integrates three main fields of tree/plant interactions, biometry of plant growth and human behaviour in forests. The book introduces methods that can reveal interactions of individual plants with other plants, their environment and human. Understanding the individual-based spatial interactions of plants can provide deep insight to establishment and formation of plant communities as one of the main goals in landscape ecology.

In 2021, we also started a project on spatial distribution of mangrove forests in the south of Iran. Mangrove forests are one of the most important ecosystems with significant ecological and socio-economic values. The forests have been established along the northern coastlines of Persian

Gulf and Gulf of Oman and their geographic extent is considered as the highest latitudes (29 degrees N) mangroves can be observed in the northern hemisphere. Previous studies have shown that one of the first quantitative characteristics of mangrove forests that is significantly influenced by natural and man-made threats is their spatial extent. Long-term monitoring changes of mangrove spatial extent can reveal their quantitative and qualitative characteristics which are important in sustainable management of the ecosystems. Considering intertidal zones mangroves grow, field measurements may be time and cost consuming. Therefore, application of remote sensing is widespread in mangrove mapping from landscape to local scales. We planned to delineate the spatial distribution of mangrove patches and monitor their spatial changes on remotely sensed data in the south of Iran. The remotely sensed data considered for this project is Landsat since the satellite has been continuously observing the earth from 1973 through the present time and provides a long-term archive of satellite images with appropriate spectral, spatial and temporal resolutions. We hope to finish the project in 2022 and report our findings on the extent and long-



term spatial changes of mangrove forests in the south of Iran.

Contact

Yousef Erfanifard, PhD (WG leader)
Dept. of Remote Sensing and GIS, University of Tehran, Tehran, Iran

Arne Pommerening, PhD (Co-WG leader)

Swedish University of Agricultural Sciences SLU, Faculty of Forest Sciences, Department of Forest Ecology and Management, Umeå, Sweden

Upcoming IALE Conference



IECL 2022
The 1st International Electronic Conference on Land
Towards Land System Science
17-19 MAY 2022 | ONLINE

Upcoming conferences with topics related to
Landscape Ecology

11-14 April 2022  

*IALE-North American Annual Meeting: The Next
Generation of Landscape Ecologists* online
More information on sciforum.net



IALE 2022 European Landscape Ecology Congress
MAKING THE FUTURE, LEARNING FROM THE PAST

Warsaw (online)
11-15 July 2022

11-15 July 2022

IALE 2022 European Landscape Ecology Congress

Making the future, learning from the past

Warsaw, Poland (online)

More information on iale2022.eu

ESP

Ecosystem Services Partnership

Upcoming conferences of
our partner organisation
ESP (Ecosystem Service
Partnership)

- 3rd ESP Africa Conference, **first half of 2022**, Musanze, Rwanda (hybrid)
- 2nd ESP MENA Conference, **2022**, Agadir, Morocco
- 4th ESP Europe Conference, **10-14 October 2022**, Heraklion, Crete, Greece
- ACES-ESP Conference, **postponed to 12-16 December 2022**, USA



The IALE Bulletin is distributed several times a year to the members of IALE. IALE - the International Association for Landscape Ecology was founded in 1982 to promote communication between scientists, planners and interdisciplinary scientific research.

IALE Executive Committee:

President: Robert Scheller (2019-2023), North Carolina State University, North Carolina State University, Campus Box 7106, Raleigh, NC 27695-7106 USA, rschell@ncsu.edu; **Secretary General: Peilei Fan** (2019-2023), Michigan State University, 201M Human Ecology Building, 552 West Circle Drive, East Lansing, MI 48824, USA, fanpeilei@msu.edu; **Treasurer: Irene Petrosillo** (2019-2023), University of Salento, 73100 Lecce, Italy, irene.petrosillo@unisalento.it; **Communication Officer and Deputy Secretary General: Bastian Steinhoff-Knopp** (2019-2023), Leibniz University Hannover, Schneiderberg 50, 30167 Hannover, Germany, steinhoff-knopp@phygeo.uni-hannover.de; **Past President: Christine FÜRST** (2019-2023), Martin Luther University Halle-Wittenberg, Von-Seckendorff-Platz 4, 06120 Halle (Saale),

Germany, christine.fuerst@geo.uni-halle.de;

Vice Presidents and their role in the Executive Committee:

Dolors Armenteras (2019-2023; Latin America); National University of Colombia, Av. Carrera 30 # 45-03, Edif. 476 - Facultad de Ciencias, Bogotá D.C., Colombia, darmenterasp@unal.edu.co; **Henry Bulley** (2019-2023; Africa; Tasks: Outreach and communication), City University of New York, 199 Chambers Street, New York, NY 10007, USA, hnbulley1@gmail.com; **Benjamin Burkhard** (2015-2019; Europe), Leibniz University Hannover, Schneiderberg 50, 30167 Hannover, Germany, burkhard@phygeo.uni-hannover.de; **Cristian Echeverria** (2017 - 2025; Latin and South America; Tasks: Networking in Latin American countries, students and young researchers network), Universidad de Concepcion, Victoria 631, Barrio Universitario Concepción, Chile, cristian.echeverria@udec.cl; **Markéta Šantrůčková** (2021 - 2025), Research Institute for Landscape and Horticulture in Czechia, Květnové nám. 391, 252 43 Průhonice, Czech Republic, santruckova@vukoz.cz; **Weiqi Zhou** (2021 - 2025), State

Key Laboratory of Urban and Regional Ecology, Research Center for Eco-Environmental Sciences of the Chinese Academy of Sciences, 18 Shuangqing Road, Haidian District, Beijing, China 100085, wzhou@rcees.ac.cn;

Chair of the Council:

Danilo Boscolo, Universidade de São Paulo, Av. Bandeirantes, 3900 - CEP 14040-901 - Bairro Monte Alegre - Ribeirão Preto - SP - Brasil, danilo.boscolo@gmail.com.

IALE International on the Internet:
www.landscape-ecology.org

Bulletin Deadline Vol. 40 no. 2:
25.05.2022

PLEASE: Send your contributions to the
Bulletin Editor **Bastian Steinhoff-Knopp**:

steinhoff-knopp@phygeo.uni-hannover.de
or info@landscape-ecology.org