

# iale BULLETIN

INTERNATIONAL ASSOCIATION FOR LANDSCAPE ECOLOGY

## Dear IALE Community,

The latest bulletin is here!

There is a lot to report: The 2023 World Congress in Nairobi, Kenya is taking shape and you are invited by the local organising committee to get involved - read the various calls in this issue of the bulletin.

An upcoming IALE World Congress also means elections for the Executive Committee. Our president Robert Scheller is calling for nominations for the various positions.

We also look back at IALE Turkey projects, the European Landscape Ecology Congress 2022 and the founding phase of IALE 40 years ago.

Enjoy reading!

*Bastian Steinhoff-Knopp*  
IALE Communication Officer



Visit the conference website here: [iale2023.mak.ac.ug/](http://iale2023.mak.ac.ug/)

## IALE 2023 World Congress

Nairobi, Kenya 10th - 15th, July 2023

### Transboundary Resource Management, Climate Change and Environmental Resilience

#### Call for Participation

We invite you to participate in the forthcoming 2023 IALE World Congress, which will take place in Nairobi Kenya in July 2023. The IALE World Congress occurs every four years and is the premier conference event for landscape ecologists worldwide addressing issues of landscape ecology spanning from the local to global scale. The 2023 World IALE Congress is expected to attract landscape ecologists from public, private, and non-profit sectors who will address a broad spectrum of environmental challenges and potential solutions to obviate them. The 2023 World Congress will be organized in a hybrid mode.

The theme of the 2023 IALE World Congress

is *'Transboundary Resource Management, Climate Change and Environmental Resilience'*.

The theme comprises of nine sub-themes as follows:

- Transboundary ecosystems in the Anthropocene: The shared ecosystems and natural resources across country boundaries and the anthropogenic effects. How human activities are altering these transboundary ecosystems.
- Managing climate risk in transboundary ecosystems: Climate change and global warming in the transboundary ecosystems; mitigation, adaptation and geoengineering.
- Borderlands, cross-border resources, and environmental resilience: Strengthening resilience in borderlands ecosystems, disturbance of ecosystems.
- Building resilience and security: Food security, water security, and livelihoods.
- Climate resilient livelihoods: Climate resilient agricultural practices, adaptive agriculture, agroecology.
- Data science and geospatial technology for sustainable landscape management.
- Drivers of landscape change and sustainability at multiple scales.
- Ecological sustainability in urban landscapes and smart cities.
- Water-Energy-Food nexus.

## Call for Symposium & Workshop Proposals

**Symposium:** We welcome proposals for Symposia (and panel sessions) as vital component of the world congress and expected to run in concert with concurrent technical sessions.

Submit a 300-word abstract for the symposium or panel session; the topic should align with at least one of the conference subthemes and include of 4-5 presentations that address aspects of topic or theme. We also welcome proposals for 2-3 integrated Symposia and panel session(s) under the same theme. The Symposium may either comprise solely of invited speakers and/or open to presentations from the general call for abstracts. Symposia organizers will be responsible for identifying speakers and presenters, moderating the symposium, as well as adhering to guidelines and deadlines stipulated by the Congress Planning Committee.

**Workshop:** Pre-conference workshops are important opportunities for knowledge sharing, including “conceptual knowledge”, modelling and technical skills from instructors with considerable experience and expertise in landscape ecology, environmental management, environmental modelling, among others.

All workshops will be in-person and involve “hands-on” activities and could be half-day or full day activities. We encourage proposals that focus on graduate students and early career scientists, resource managers and policy makers, and underrepresented minorities including women, as well as address the needs for capacity development in developing countries. Workshops participation will be based on fees, but we encourage workshop proposals that provide sponsorship opportunities for participants on a need basis. The participation fee will help cover costs of logistics including audio-visual equipment, food and beverage or facility charges.

**Deadline for Symposium/Panel/Workshop abstract submission:**  
*30st November 2022*

**Latest Notification of abstract acceptance:** *15st December 2022*

**Submit symposium abstracts online at:** [iale2023.mak.ac.uk/about-iale-2023/call-abstracts](http://iale2023.mak.ac.uk/about-iale-2023/call-abstracts).

**Note:** IALE 2023 Congress Organizers are not responsible for providing any funding and travel support, registration or honoraria for Symposium and workshop organizers and/or invited speakers.

Download the Call for Symposium & Workshop Proposals [here](#).

## Paper and Poster Abstracts

We invite IALE community and interested persons to submit a 300-word abstract for paper and/or Poster presentation. Note that each person may be listed on multiple abstracts but cannot be the primary author for more than submissions. The abstracts should target one or more of the conference sub-themes and articulate the problem, methods employed, major results and conclusions.

**Paper/Poster Abstracts submission portal open:** *1st January 2023*

**Deadline for Paper and Poster abstract submission:** *15th February 2023*

**Latest Notification on abstract acceptance:** *31st March 2023*

Download the Call for Symposium & Workshop Proposals [here](#).

## More Information

IALE2023 Congress Secretariat

Email: [iale.2023@mak.ac.uk](mailto:iale.2023@mak.ac.uk)

Or contact us via

[iale2023.mak.ac.uk/contact](http://iale2023.mak.ac.uk/contact)

## IALE Elections - Call for Nominations

Author: Robert Scheller

IALE is seeking nominations for President, Treasurer, Secretary General, and four Vice Presidents (for more information about each position, see section F of our bylaws: [landscape-ecology.org/Statutes](http://landscape-ecology.org/Statutes)). This is a great opportunity for dedicated individuals to steer us into the future and to provide advice, wisdom, and regional perspectives. We welcome individuals from all regions and all career stages. These positions will begin in July 2023 (at the World Congress) and will last for four years. The effort required is not large - typically only a couple hours per week on average.

IALE has a strong financial position and a solid foundation with a new membership database, excellent chapter support, digital archives, etc.

Personally, my term as President has been super rewarding. Although travel was limited due to the pandemic, I have



nevertheless been able to form friendships and collaborations with landscape ecologists from around the world. The executive committee has been incredibly supportive and dedicated and we have tackled many challenging issues. We have worked together to make a strong organization even stronger.

Now we need new folks to join the executive committee and continue these efforts. Please nominate yourself or a worthy colleague (or both!) for these positions. Nominations will be accepted until the elections begin in the first quarter of 2023. Send your nominations directly to Robert Scheller: [rschell@ncsu.edu](mailto:rschell@ncsu.edu)



# Looking back at the IALE 2022 European Landscape Ecology Congress

Authors: IALE Europe Executive Committee

We look back with pleasant memories at the IALE 2022 European Landscape Ecology Congress – Making the future, learning from the past, which took place on July 11-15, 2022. The congress was jointly organised by the European Association for Landscape Ecology (IALE-Europe), Polish Association for Landscape Ecology (PAEK), Institute of Geography and Spatial Organization, Polish Academy of Sciences (IGiPZ PAN) and Faculty of Geography and Regional Studies, University of Warsaw (WGiSR UW). Firstly, we are grateful to all members of the local organising committee from IGiPZ PAN and WGiSR UW, namely Andrzej Affek (Chair), Edyta Regulska, Anna Kowalska, Agnieszka Sosnowska, Alina Gerlée, Jerzy Lechnio, Jacek Wolski, and Ewa Kołaczowska. They did not only commit their time and energy over the last three years preparing the congress but also dealt with two phases of fundamental re-organisations due to the COVID-19 pandemic and the war in Ukraine. The shift to an online congress format created additional challenges to organise and manage all administrative and technical infrastructure. Their dedication made this congress possible and, most importantly, a real success.

## The Congress:

In total 28 symposia were organised in ten thematic groups. About 400 participants from almost 50 countries attended, from Europe, Asia, North and South America, and Africa. About 320 papers and over 50 posters were presented, authored by more than 1.000 people. You can download the Book of Abstracts at: [rcin.org.pl/dlibra/publication/272456/edition/235842/content](https://rcin.org.pl/dlibra/publication/272456/edition/235842/content)

We want to honour the winners of the congress poster competition once again: Michał Sobala, Matteo Riva, Frederik Gerits, and Witold Piniarski.

Three insightful keynotes were given. On the first day, Prof. dr. Andrzej Richling from the Polish Association for Landscape Ecology and the University of Warsaw gave an overview of the development of Landscape Ecology in Poland and highlighted the achievements of the association since its foundation in 1993. Learning from this past experience, two forward-looking keynotes followed in the next days. Prof. dr. Anna Hersperger from the Swiss Federal Research Institute WSL presented recent research on landscape ecological concepts in planning and illustrated how vague planning intentions can be translated into scenario-based simulations to envision future landscapes. Finally, Prof. dr. Richard Weller, Executive Director of the McHarg Center for Urbanism and Ecology, University of Pennsylvania, focused on the consequences of urbanisation in the fastest growing cities near world biodiversity hotspots and presented 'The World Park' as an initiative to restore landscapes to achieve greater representation of and connectivity for biodiversity. Several workshops were held during the congress. One discussed the aim of producing an international farmland biodiversity indicator based on habitats and landscape structure. This exchange will continue and may lead to a new IALE-Europe working group.

## Online excursions:

Excursions are essential for our IALE congresses to learn about specific landscapes and their people. Given the online format of the congress, the excursions were in video format. You can watch the four video excursions prepared by the local organising team especially for the congress:

*Warsaw from the riverside* (12:42): [youtu.be/BN8T9ojdzC4](https://youtu.be/BN8T9ojdzC4)

*Warsaw in green infrastructure époque* (11:19): [youtu.be/WrIL4f6jltY](https://youtu.be/WrIL4f6jltY)

*Natural and cultural heritage of central Mazovian Region* (13:36):

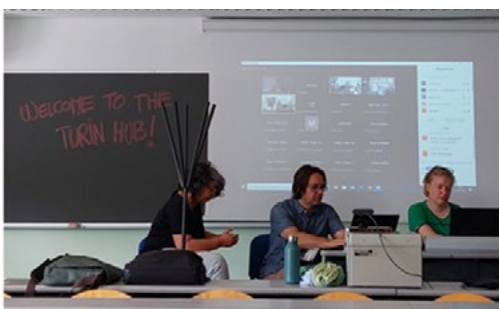
[youtu.be/zEGcTIIlIlg](https://youtu.be/zEGcTIIlIlg)

*Landscape mosaic of Ponidzie Region* (14:14): [youtu.be/SgqoER-i288](https://youtu.be/SgqoER-i288)



Below: Big thanks to the organising "dream team" in Warsaw that professionalised the online event at the highest level using the Whova platform. (© IALE Europe)

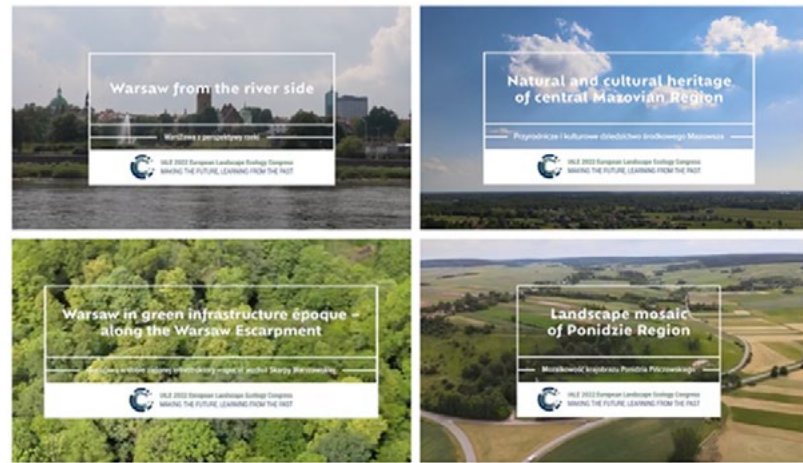
Top: Opening Session in Warsaw studio with Andrzej Affek and Edyta Regulska from the local organising team, Marek Degórski (Chair from Scientific Committee of Congress), and the IALE-Europe president Veerle Van Eetvelde (online) (© IALE Europe)



Caption: IALE members from four countries met at the Turin Hub, participating in the congress and networking. © IALE Europe

### Congress hubs:

Along with the congress, we successfully launched and tested a “Regional congress hub” in Turin (Italy) during the congress, for which we want to thank Federica Larcher. This format consists of joining groups of participants that met in an alternative location where the online event was streamed. This format overcame the lack of face-to-face social interaction and experience of the landscape that is typically missing in online events. People meet and jointly participate in online congress formats while discussing congress topics and networking. Despite the impacts of the pandemic, the past period also provided us with new tools supporting the development of new future and hybrid conference models. The regional hubs can be the alternative to reduce the carbon footprint by avoiding flights.



Caption: The four virtual excursions will stay online on Youtube. Watch!  
© IALE Europe

## News from IALE-Europe

Authors: IALE Europe Executive Committee

### General Assembly

During the European IALE congress, the General Assembly (GA) was held online, enabling all members attendance regardless of congress participation. The current elected Executive Committee presented a report on the association's organisation, management and administration. This included activities and achievements related to the action plan 2017-2021 and further activities. Besides, the status of the memberships and the financial report was presented and approved by the GA. The minutes and further information will soon be online available at the webpage (<https://iale-europe.eu/general-assembly-and-statutes>).

Furthermore, the GA discussed the procedure of the elections of the new Executive Committee and IALE-Europe council representative for the term 2022-2025. The postponement of the congress also led to the suspension of the GA, including the elections. The GA agreed on the timing and procedure for the next election, including a call for candidates in mid-September and an online voting

in mid-October 2022. All IALE-Europe members and members of the national IALE chapters with a collective membership will be informed by IALE-Europe or by their national IALE chapters.

The General Assembly also paid tribute to the great contribution of Bob Bunce, who passed away in April 2022 and was one of the founding fathers of IALE-Europe. A final thank you from the IALE-Europe EC. Finally, as members of the IALE-Europe Executive Committee 2017-2022, we would like to thank the worldwide IALE community for the good collaboration, support and spirit during the past years. Since our election in 2017, we have had many great moments. We do hope that, despite the challenges and difficulties of the past years, we have further promoted and supported the ideas of landscape ecology and strengthened the community of landscape ecologists across Europe. We will support a smooth transition to the next Executive Committee and hope to see you at one of the future events of IALE.

Warm wishes from the IALE-Europe EC members 2017-2022



The members of the EC 2017-2022 during the live meeting in winter 2018 under an orange tree (*Citrus aurantium*) in Lisbon.

From right to left:

*Isabel Loupa-Ramos*, *Veerle Van Eetvelde* (president), *Andrzej Affek* (treasurer), *Simona R. Grădinaru* (secretary general), *Wenche Dramstad*, *Werner Rolf*, and *Jonathan Porter*.



# Conservation of An Endemic Oak Species (*Quercus Vulcanica*) Under Environmental Change: An Integrated Approach Project

Author: Elif Deniz Ulker

This project started in 2021 as a part of Elif Deniz ÜLKER's PhD and funded by the Rufford Small Grants Programme. Within the scope of this project, she planned to use an integrated approach to obtain comprehensive results by exploring the population structure and possible threats on its populations and modelling the glacial refugias and the future distribution ranges by using Ecological Niche Modelling approach. Thereby, it was aimed to predict the species responses to the future environmental changes. The results will provide direct conservation and forestry implications for the most diverse and vulnerable populations of *Q. vulcanica*. During the field surveys, all the populations over Anatolia were visited

and 100 individuals from 22 populations were sampled in 16 days. Among them, the second biggest Kasnak oak individual according to the known records was identified and measured. According to the future model results, the species will be contracted from its current distribution range in the optimistic scenario, however it is predicted that for the worst-case scenario *Q. vulcanica* will have a dramatic loss of its populations. The forestry implications, and conservation measures will be proposed based on these results. As a final event, an online meeting with the forest branch offices, where the field surveys were conducted, will be organized to share the obtained results and experiments reciprocally.



# The development of a mobile application for Citizen Science: Tree Inventory and Analysis in Ankara, Turkey

Author: Ekin Oktay

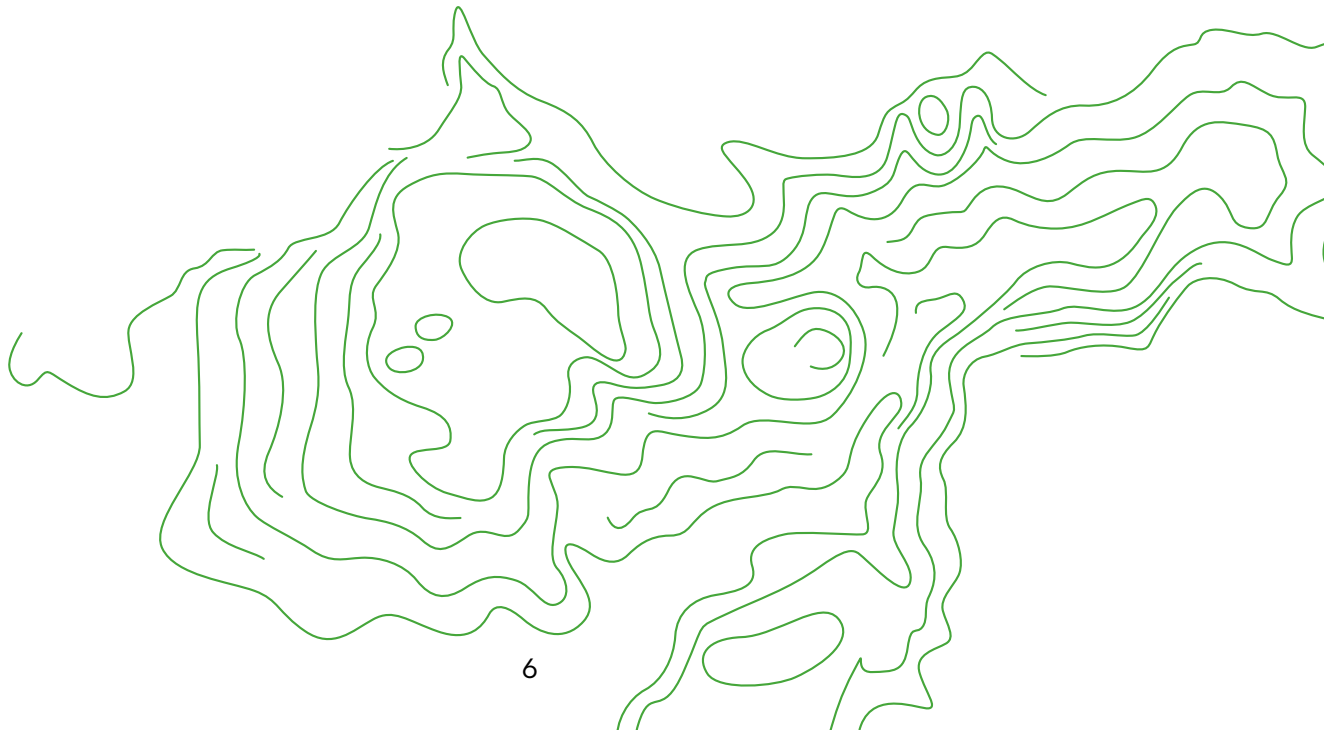
IALE-Turkey, Landscape Research Society (PAD), has completed a tree inventory project in capital Ankara. The project is executed by Assoc. Prof. Zuhul Dilaver from Ankara University with the support of Ekin Oktay, Ecem Hosgor, and Semiha Demirbas and it was supported by UNDP GEF SGP, Small Grants Programme. Within the project, a mobile application was developed by using i-Tree database and a manual

which provides background information on urban ecosystem services and provide necessary information on usage of the application. A pilot study was carried out with the participation of the several other NGO's in November. The attributes of street trees had been recorded into "AGACIM" application. The Turkish manual and mobile application is publicly available. We hope that the application's Turkish

interface would enhance the contribution of citizens into inventory studies. We thank to i-Tree team for their great support during the process and SGP for enabling the financial support, and all users and supporters for their contribution to the inventory studies. The tree inventory would help us to reveal the invisible contribution of urban trees to the society.



© Ekin Oktay





## New publication in the Springer Landscape Series

Wohlgemuth, Thomas; Jentsch, Anke; Seidl, Rupert  
Disturbance Ecology

- First text book on disturbance ecology written from the Central European perspective
- Provides a consistent overview of drivers and impacts of important disturbance agents across different ecosystems
- Integrates issues of global change on disturbances and disturbance management



Fan, Peilei

The Great Urban Transition

Landscape and Environmental Changes from Siberia, Shanghai, to Saigon

- First book to examine urban landscape and environmental changes across various transitional economies in Asia
- Reveals how the hybrid of market logic and state intervention has produced a variety of unique landscapes in Asia
- Demonstrates intensified global forces in shaping urban landscape of Asia

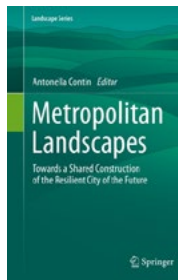


Contin, Antonella

Metropolitan Landscapes

Towards a Shared Construction of the Resilient City of the Future

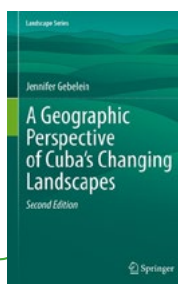
- Discusses the approach introduced by the concept of urban metabolism that considers the harmonious arrangement of landscapes in a single ecosystem, and accordingly to the décalage from rural to urban context, understood through new design strategies of transformation, replacement or maintenance
- Provides metropolitan key studies as generators of theoretical contents and approaches, data, experiences, good practice and tools to remove or avoid obstacles to plan the metropolitan city/region
- Fosters specialization for civil servants and professionals engaged in several sectors and can be used as a didactic tool dedicated to higher education



Geblein, Jennifer

A Geographic Perspective of Cuba's Changing Landscapes

- Offers unique interrelated issues that are of utmost importance to those interested in the future of Cuba
- Includes maps of data showcasing land use and land cover changes as well as sea level rise prediction
- Focusses on the role of education in moving forward towards a sustainable future



## News from the Working Group Urban and peri-urban Governance

Author: Marcin Spyra

- Recently published article addressing the ecosystem service concept teaching: The working group developed the survey that was a basis for this study with the support of IALE: [ecologyandsociety.org/vol27/iss3/art2/](http://ecologyandsociety.org/vol27/iss3/art2/)
- Another article authored by working group members address aspects of urbanized rural areas: [www.mdpi.com/2073-445X/11/7/969](http://www.mdpi.com/2073-445X/11/7/969)
- A topical collection in the Land journal addressing "Integrated Management, Planning, and Policy for Sustainable Landscape Development in Europe" is open for submission: [www.mdpi.com/journal/land/topical\\_collections/8DWS367SYI](http://www.mdpi.com/journal/land/topical_collections/8DWS367SYI)



# The founding phase of IALE

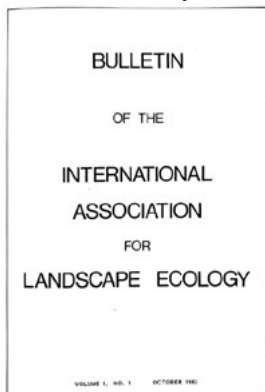
Author: Bastian Steinhoff-Knopp



Caption: Cover sheet of the second circular to the 1981 congress Perspectives in Landscape Ecology

1982. The world population was estimated at 4.6 billion people. E.T. the Extra-Terrestrial and Blade Runner were in the cinemas. Italy won the football world championship and Zev Naveh published an article with the programmatic title "Landscape Ecology as an Emerging Branch of Human Ecosystem Science" (Naveh 1982, [doi.org/10.1016/S0065-2504\(08\)60079-3](https://doi.org/10.1016/S0065-2504(08)60079-3)).

It is also the year in which IALE was founded on 29th October 1982 at the VIth International Symposium on Problems of Landscape Ecological Research in Piestany (then Czechoslovakia, now Slovakia). It was preceded in 1981 by the international congress Perspectives in Landscape Ecology, organised by the Netherlands Society for Landscape Ecology.



Caption: Cover sheet of first Bulletin of IALE - published October 1982 by the IALE founding committee (before the foundation). Download this first bulletin here.

The 1981 congress programme states: „[...] there will be a special meeting on Thursday evening, dedicated to international co-operation in landscape ecology. The aim of this meeting is to discuss ways and means to improve communication between research workers and planners in different countries.” (Second Circular for Congress “Perspectives in Landscape Ecology”, 1980,

p. 8). It must have been a successful meeting. A nine-member founding committee was formed. The members came mainly from the Netherlands and were W. Bleuten (Utrecht, NL), W.B. Harms (Wageningen, NL), S.m. ten Houte de Lange (Leersum, NL), E. van der Maarel (Uppsala, Sweden), S.W.F. van der Ploeg (Amsterdam, NL), H.G.A. Reimerink (Zwolle, NL), A.P.A. Vink (Amsterdam, NL), I.S. Zonneveld (Enschede, NL), J.I.S. Zonneveld (Utrecht, NL). A first bulletin, published by the founding committee before the planned foundation in October 1982, documents the work and decisions of the committee.

This first Bulletin defines what IALE

(and the Bulletin) should be. The basis for the structure of our society were the results of a survey published there. This ranges from the name of the society (the acronym IALEM for Landscape Ecology and Management was apparently also in the running) to the type of membership and the idea of regions as an organisational form. The bulletin includes multiple references to the upcoming foundation of IALE. Finally, the aims of IALE were defined as followed:

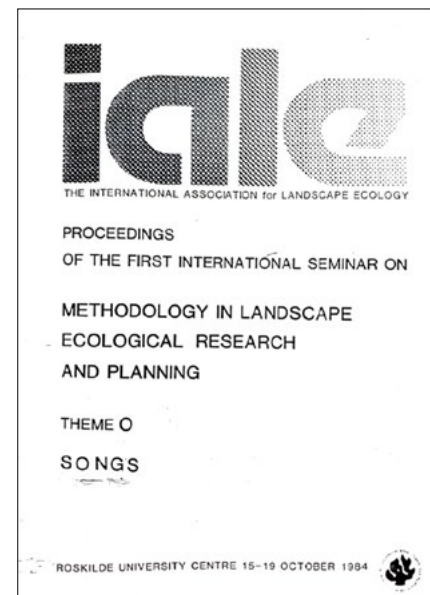
1. To further communicate between scientists as well as planners working in the broad field of landscape ecology.
2. To advance scientific research on landscape ecology on an integrated and interdisciplinary basis.
3. To promote application of knowledge on landscape ecology and to further interaction between scientist and planners.
4. To promote a balanced interaction between man and his environment.

The first official bulletin in 1983 documents the foundation of IALE as the product of several years of discussions and preparations. The final statutes were adopted by the founding members at the VIth International Symposium on Problems of Landscape Ecological Research in Piestany, 29th October 1982. Representatives from the following countries were present: Austria, Canada, Cuba, Denmark, Federal Republic of Germany, The Netherlands, Portugal, Thailand, the United States of America. Representatives of the following states were present as observers: Bulgaria, Czechoslovakia, German Democratic Republic, Hungary, Poland, Soviet Union. After the adoption of the statutes, the chairman of the founding meeting, S.W.F. van der Ploeg, declared IALE as founded. I.S. Zonneveld (Netherlands) was elected as the first President, R.T.T. Forman (USA) and K.F. Schreiber (Fed. Rep. Germany) were elected as Vice Presidents. Secretary General and Deputy Secretary General are S.M. ten Houte de Lange and W.B. Harms, first elected Treasurer is F.J.A. Saris (all from the Netherlands).

IALE is underway. The next milestone will be the first IALE meeting in October 1984 in Roskilde, Denmark. Fun fact from that meeting: The proceedings included a collection of songs related to landscape and nature from different countries.



Caption: Cover of first official IALE Bulletin - published October 1983 (after foundation). Download the Bulletin Vol. 1, No. 1. here.



Caption: Cover of the proceedings of the first international seminar on Methodology in Landscape Ecology Research and Planning - Theme O - Songs.



## Upcoming IALE Conference



IALE - NORTH AMERICA

19-23 March 2023

*IALE-North American Annual Meeting*

Riverside, California

More information on [ialena.org](http://ialena.org)



10-15 July 2023

*IALE World Congress 2023: Transboundary Resource Management, Climate Change and Environmental Resilience*

Nairobi, Kenya

More information on [iale2023.mak.ac.ug](http://iale2023.mak.ac.ug)

**ESP**  
Ecosystem Services Partnership

Upcoming conferences of our partner organisation ESP  
(Ecosystem Service Partnership)



- ACES-ESP Conference, **12-15 December 2022**, Washington DC, USA
- ESP MENA Conference, **2022**, Morocco



The IALE Bulletin is distributed several times a year to the members of IALE. IALE - the International Association for Landscape Ecology was founded in 1982 to promote communication between scientists, planners and interdisciplinary scientific research.

### *IALE Executive Committee:*

**President:** Robert Scheller (2019-2023), North Carolina State University, North Carolina State University, Campus Box 7106, Raleigh, NC 27695-7106 USA, [rschell@ncsu.edu](mailto:rschell@ncsu.edu); **Secretary General:** Peilei Fan (2019-2023), Michigan State University, 201M Human Ecology Building, 552 West Circle Drive, East Lansing, MI 48824, USA, [fanpeile@msu.edu](mailto:fanpeile@msu.edu); **Treasurer:** Irene Petrosillo (2019-2023), University of Salento, 73100 Lecce, Italy, [irene.petrosillo@unisalento.it](mailto:irene.petrosillo@unisalento.it); **Communication Officer and Deputy Secretary General:** Bastian Steinhoff-Knopp (2019-2023), Leibniz University Hannover, Schneiderberg 50, 30167 Hannover, Germany, [steinhoff-knopp@phygeo.uni-hannover.de](mailto:steinhoff-knopp@phygeo.uni-hannover.de); **Past President:** Christine Fürst (2019-2023), Martin Luther University Halle-Wittenberg, Von-Seckendorff-Platz 4, 06120 Halle (Saale),

Germany, [christine.fuerst@geo.uni-halle.de](mailto:christine.fuerst@geo.uni-halle.de);

### *Vice Presidents and their role in the Executive Committee:*

**Dolors Armenteras** (2019-2023; Latin America); National University of Colombia, Av. Carrera 30 # 45-03, Edif. 476 - Facultad de Ciencias, Bogotá D.C., Colombia, [darmenterasp@unal.edu.co](mailto:darmenterasp@unal.edu.co); **Henry Bulley** (2019-2023; Africa; Tasks: Outreach and communication), City University of New York, 199 Chambers Street, New York, NY 10007, USA, [hnbulley1@gmail.com](mailto:hnbulley1@gmail.com); **Benjamin Burkhard** (2015-2019; Europe), Leibniz University Hannover, Schneiderberg 50, 30167 Hannover, Germany, [burkhard@phygeo.uni-hannover.de](mailto:burkhard@phygeo.uni-hannover.de); **Cristian Echeverria** (2017 - 2025; Latin and South America; Tasks: Networking in Latin American countries, students and young researchers network), Universidad de Concepcion, Victoria 631, Barrio Universitario Concepción, Chile, [cristian.echeverria@udec.cl](mailto:cristian.echeverria@udec.cl); **Markéta Šantrůčková** (2021 - 2025), Research Institute for Landscape and Horticulture in Czechia, Květnové nám. 391, 252 43 Průhonice, Czech Republic, [santruckova@vukoz.cz](mailto:santruckova@vukoz.cz); **Weiqi Zhou** (2021 - 2025), State

Key Laboratory of Urban and Regional Ecology, Research Center for Eco-Environmental Sciences of the Chinese Academy of Sciences, 18 Shuangqing Road, Haidian District, Beijing, China 100085, [wzhou@rcees.ac.cn](mailto:wzhou@rcees.ac.cn);

### *Chair of the Council:*

**Danilo Boscolo**, Universidade de São Paulo, Av. Bandeirantes, 3900 - CEP 14040-901 - Bairro Monte Alegre - Ribeirão Preto - SP - Brasil, [danilo.boscolo@gmail.com](mailto:danilo.boscolo@gmail.com).

IALE International on the Internet:  
[www.landscape-ecology.org](http://www.landscape-ecology.org)

**Bulletin Deadline** Vol. 40 no. 4:  
01.12.2022

PLEASE: Send your contributions to the Bulletin Editor **Bastian Steinhoff-Knopp:**

[steinhoff-knopp@phygeo.uni-hannover.de](mailto:steinhoff-knopp@phygeo.uni-hannover.de)  
or [info@landscape-ecology.org](mailto:info@landscape-ecology.org)